



January 1997

EMBARGO: 11:00 AM (CANBERRA TIME) MON 23 DEC 1996

# South Australian Economic Indicators

ABS Catalogue No. 1307.4



# ABS PUBLICATIONS, SOUTH AUSTRALIA

Cat. No. Publication

Latest issue Date of issue

## GENERAL

1202.4	Information Paper : Guidelines for the Development of Community Surveys <i>irr</i>		
1301.4	South Australian Year Book <i>a</i> (\$35.00)		14 Nov. 1985
1302.4	Pocket Year Book of South Australia <i>a</i> (\$8.50)	1997	18 Dec. 1995
1304.4	Local Government Area Statistics <i>irr</i> (\$20.00)	1995	1 May 1995
1306.4	South Australia at a Glance <i>a</i>	1993	30 July 1993
1307.4	South Australian Economic Indicators <i>m</i> (\$15.50)	1996	1 May 1996
1352.4	Sales of Goods and Services by Businesses Involved in Water Related Activity in South Australia <i>irr</i> (\$13.00)	Dec. 1996	29 Nov. 1996
		1994-95	7 Dec. 1995

## POPULATION AND VITAL STATISTICS

2840.4	Adelaide, a Social Atlas <i>irr</i> (\$45.00)		
2841.4	Aboriginal People in South Australia <i>irr</i> (\$15.00)	Census 1991	31 Mar. 1993
3201.4	Estimated Resident Population in Statistical Local Areas, Preliminary <i>a</i> (\$10.70)	Census 1991	11 Feb. 1994
3202.4	Estimated Resident Population in Statistical Local Areas <i>irr</i> (\$10.00)	30 June 1992	15 Apr. 1993
3204.4	Estimated Resident Population by Age and Sex in Statistical Local Areas <i>a</i> (\$14.50)	June 1986 to 1991	28 Oct. 1993
3311.4	Demography <i>a</i> (\$18.00)	30 June 1995	25 Mar. 1996
3312.4	Deaths <i>a</i> (\$15.00)	1994	8 Mar. 1996
		1993	6 Dec. 1994

## SOCIAL STATISTICS

4104.4	Aboriginal Births and Deaths, Review of Data Quality and Statistical Summary <i>irr</i> (\$9.50)	1988	16 Mar. 1990
4175.4	Participation in Sporting and Physical Recreational Activities <i>irr</i> (\$14.50)	Oct. 1995	21 Dec. 1995
4190.4	National Aboriginal and Torres Strait Islander Survey <i>irr</i> (\$17.00)	1994	17 Sept. 1996
4195.4	Aboriginal and Torres Strait Islander People at a Glance <i>irr</i> (\$1.00)	1994	27 Sept. 1996
4402.4	Community and Volunteer Work <i>irr</i> (\$7.50)	Oct. 1988	4 Aug. 1989
4509.4	Crime and Safety <i>irr</i> (\$11.50)	Apr. 1995	31 Aug. 1995

## PUBLIC FINANCE

5502.4	Local Government Finance <i>a</i> (\$10.70)		
5503.4	State and Local Authorities Finance <i>a</i> (\$13.30)	1991-92	21 May 1993
		1991-92	2 July 1993

## LABOUR FORCE

6204.4	Womens Work <i>irr</i> (\$3.00)		
6215.4	Women's Employment Patterns, Adelaide Statistical Division <i>irr</i> (\$10.00)	July 1992	23 July 1992
		Nov. 1992	17 Feb. 1993

## RURAL

7111.4	Principal Agricultural Commodities, Preliminary <i>a</i> (\$13.50)		
7113.4	Agriculture <i>a</i> (\$16.50)	1995-96	11 Sept. 1996
		1994-95	15 July 1996

## MANUFACTURING

8221.4	Manufacturing Industry <i>a</i> (\$17.00)	1993-94	12 Dec. 1996
--------	---	---------	--------------

## INTERNAL TRADE

8623.4	Retailing in South Australia <i>irr</i> (\$15.00)	1991-92	21 Jan. 1994
8635.4	Tourist Accommodation <i>q</i> (\$15.00)	Sept. qtr 1996	13 Dec. 1996

## BUILDING

8731.4	Building Approvals <i>m</i> (\$13.50)	Oct. 1996	2 Dec. 1996
8741.4	Dwelling Unit Commencements Reported by Approving Authorities <i>m</i> (\$13.00)	Aug. 1996	22 Nov. 1996
8752.4	Building Activity <i>q</i> (\$13.50)	June qtr 1996	12 Nov. 1996

## TRANSPORT

9203.4	Drivers and Passengers : Travel to Work, Adelaide Statistical Division <i>irr</i> (\$10.00)	Oct. 1993	14 Dec. 1993
--------	---	-----------	--------------



# **SOUTH AUSTRALIAN ECONOMIC INDICATORS**

**January 1997**

**P.M. GARDNER**  
Regional Director

**AUSTRALIAN BUREAU OF STATISTICS**

**CATALOGUE NO. 1307.4**

© Commonwealth of Australia 1996

Produced by the Australian Government Publishing Service

## PREFACE

*South Australian Economic Indicators* is a monthly publication which contains the latest available data at the time of preparation for a range of statistical series that have been identified as indicators of economic activity in this State. In a number of cases the figures presented are preliminary and subject to revision in subsequent issues.

Written and graphic commentary have been included for many of the selected series and analysis has been augmented with the calculation of the percentage change from the previous reference period together with the presentation of comparative Australian data.

Time series information has been included to provide a historical perspective on many of the selected indicators. Future issues may be expanded to include further historical data in response to expressed user needs. This product is under continuous review and any suggestions for enhancement will be welcomed.

More detailed information on each series, including explanatory and technical notes, can be obtained from other Australian Bureau of Statistics publications or alternative data sources. To assist those seeking further information a source publication for each of the series has been documented in the statistical summary.

This issue includes a special article entitled *South Australian Agriculture Finance Statistics*. Future issues will contain further articles on statistical topics which concentrate on longer term trends or other issues pertinent to the South Australian economy.

If you have any inquiries concerning this publication please contact the editor, John Callinan, telephone (08) 8237 7307. All requests for statistical information should be directed to the ABS Information Service, GPO Box 2272, Adelaide SA 5001, telephone (08) 8237 7100.

P.M. GARDNER  
Regional Director

Australian Bureau of Statistics  
Adelaide  
December 1996





# CONTENTS

Page

Preface iii

**REVIEW** 2

Overview  
State accounts  
International accounts  
Consumption and investment  
Production  
Prices  
Labour force and demography  
Incomes  
Financial markets  
Forward outlook

**STATISTICAL SUMMARY** 18

State accounts  
International accounts  
Consumption and investment  
Production  
Prices  
Labour force and demography  
Incomes  
Financial markets

**FOCUS** 20

South Australian Agriculture, Finance Statistics

**TIME SERIES**

State accounts - current prices 24  
State accounts - average 1989-90 prices 25  
Merchandise exports by commodity group 26  
Merchandise exports by country 26  
Merchandise exports by industry of origin 27  
Merchandise imports by commodity group 27  
Turnover of retail establishments by industry 28  
New motor vehicle registrations by type of vehicle 29  
Actual private new capital expenditure by selected industry  
and type of asset 30  
Tourist accommodation 31  
Building approvals 32  
Building commencements 33  
Value of building work done during period 33  
Production, livestock and selected commodities 34  
Consumer price index, by group 36  
Average retail prices of selected consumer items 37  
Estimated resident population and components of population  
change 37  
Labour force - numbers 38  
Labour force - rates 39  
Labour force - area 40  
Average weekly earnings of employees 42  
Finance commitments 43

For more information 44

# REVIEW

---

## Overview

---

- Merchandise exports for the month of October 1996 were \$423.9 million, an increase of 35.0% on September 1996 and 39.2% on October 1995.
- The value of merchandise imports for October 1996 was \$284.8 million, a 1.9% decrease on the previous month and a 10.7% increase on October 1995.
- The trend estimate of retail turnover in South Australia fell by 0.8% in October 1996. The South Australian trend estimate has been in decline from July.
- The downward trend for new motor vehicle registrations in South Australia evident since April 1996 continued in October 1996 with a decrease of 2.6% from September 1996.
- The October 1996 trend estimate for dwelling unit approvals in South Australia continued its upward movement for the fifth consecutive month with a 3.9% increase in September 1996.
- The value of non-residential building in South Australia has halved falling to a low of \$28.5 million for October 1996.
- The Price Index of Materials used in House Building in Adelaide rose 0.4% for the month of October 1996.
- Adelaide recorded an increase of 0.4% in the Price Index of Materials used in Building other than House Building.
- During the September quarter 1996 the Price Index of Established Houses in Adelaide decreased 0.1% and the Project Home Index decreased 0.7%.
- At 30 June 1996 the estimated resident population of South Australia was 1,479,153.
- After remaining flat in the ten months to August 1996, the trend unemployment rate for South Australia has increased to 9.6% in November 1996.
- There were 1,800 working days lost through industrial disputes in South Australia during September 1996.
- During September 1996 there were 5,481 short-term visitor arrivals in South Australia and 13,917 short-term departures.
- In the 12 months to October 1996, the weekly award rates of pay index for full-time employees in South Australia increased by 1.4%.
- The trend estimate for the value of owner-occupied housing commitments continued its upward climb with October rising 1.5% to \$237.0 million.

## State Accounts

**NOTE:** Deficiencies in the data sources used to estimate gross operating surplus for recent quarters may at times lead to the current price estimates of gross state product GSP(I) being under or over stated for particular States. Consequently, the measured growth rate for constant price GSP(I) for those States will also be affected.

The constant price series for gross state product (GSP) have been labelled as 'experimental'. Users are cautioned that these estimates are derived indirectly by calculating a deflator from the expenditure components. It is emphasised that, at times, movements that can not be fully explained may be introduced into the constant price GSP(I) series through the use of this proxy deflator.

### *Trend Estimates (Current Prices)*

Gross state product (GSP) grew 0.8% in the June quarter compared with the national average of 1.4%. This is the third consecutive quarter in which the rate of increase in GSP has slowed and is considerably below the strong growth of 2.3% recorded in the September quarter 1995.

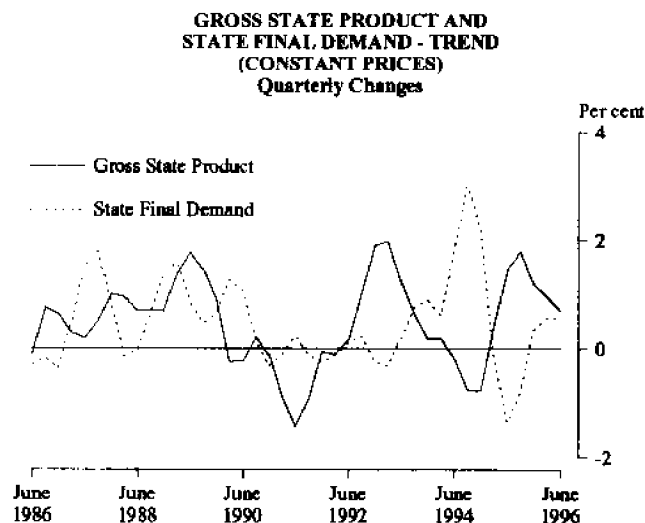
Wages, salaries and supplements grew 0.8%, slightly lower than in recent quarters. Growth continues to be below the national rate, a trend evident since the December quarter 1993. Growth through the year to June quarter 1996 was 4.8% compared with the national average of 6.2%.

Gross operating surplus grew by 1.0% in the June quarter, continuing a pattern of falling growth rates evident from December quarter 1995. By contrast the national average has remained fairly constant at about 1.8% for the past 3 quarters.

Indirect taxes less subsidies grew by 0.4% in the June quarter, continuing a pattern of falling growth rates evident from the September quarter 1995.

### *Trend Estimates (Constant Prices)*

The experimental GSP at constant prices grew 0.7% in the June quarter and was 4.7% above June quarter 1995. The increase in GSP outstripped that of state final demand for the sixth consecutive quarter although the gap has narrowed significantly over the past 2 quarters.



Growth in state final demand of 0.6% in the June quarter is below the national growth of 0.9% in domestic final demand. Growth in state final demand has been below the national average for 6 consecutive quarters although the gap has narrowed over the past 2 quarters.

Private final consumption expenditure grew 0.4% in the June quarter compared with the national average of 0.8%. Growth in private final consumption expenditure has been fairly constant over the past 3 quarters. Growth through the year to the June quarter 1996 was 2.1%, approximately half the national rate of 4.1%.

Private gross fixed capital expenditure grew 2.8% in the June quarter compared with the national average of 1.8%. Increases in expenditure on equipment and non-dwelling construction more than offset the decline in expenditure on dwellings, which fell for the seventh consecutive quarter.

The decline of 0.1% in public final demand reflects a fall in government final consumption expenditure (which fell for the sixth consecutive quarter) and quite strong growth in public gross fixed capital expenditure.

## International Accounts

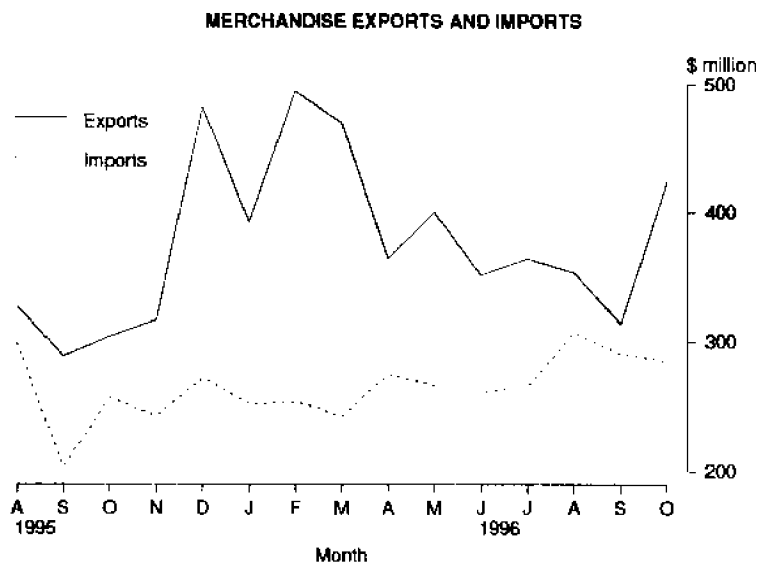
### Exports

Merchandise exports, where the final stage of production was in South Australia, for the month of October 1996 were \$423.9 million, an increase of 35.0% on September and 39.2% on October 1995.

The major commodity groups exported during October 1996 were road vehicles, parts and accessories with \$75.9 million an increase of \$39.1 million on last month, cereal and cereal preparations \$47.3 million, metals and metal manufactures \$46.3 million and wine \$40.6 million.

On an industry of origin basis the machinery and equipment manufacturing industry increased \$34.1 million to \$110.8 million for the month of October. Other large increases occurred in the mining sector \$21.5 million after a very low September figure of \$2.0 million and metal product manufacturing \$14.5

The United States of America was the major country of destination in October 1996 with a value of \$74.2 million. Japan with \$65.8 million was next, followed by New Zealand with \$40.3 million.



### Imports

The value of merchandise imports for October 1996 was \$284.8 million, a 1.9% decrease on the previous month and a 10.7% increase on October 1995. Machinery accounted for the largest proportion of imported goods with \$72.1 million or 25.3% of total imports, followed by petroleum and petroleum products \$50.3 million (17.6%) and road vehicles, parts and accessories \$48.3 million (17.0%).

## Consumption and Investment

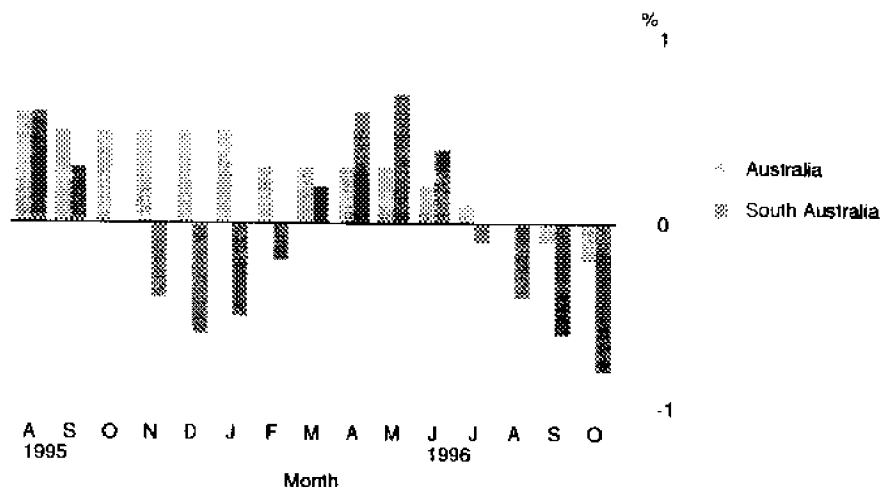
### Retail Turnover

The trend estimate of retail turnover in South Australia fell by 0.8% in October 1996. The South Australian trend estimate has been in decline from July. The trend estimate for Australia fell by 0.2%.

Over the past three months the trend estimate for South Australia fell by \$13.6 million caused by the decreases of \$8.8 million in hospitality and services, \$6.6 million in other retailing, \$3.4 million in household good retailing, \$3.3 million in clothing and soft good retailing, and \$1.7 million in department stores. This was partly offset by increases of \$9.2 million in food retailing and \$1.2 million in recreational good retailing group.

The seasonally adjusted estimate of retail trade in October 1996 decreased 0.8%. In original terms, South Australian retail turnover was \$771.8 million, a decrease of 0.3% on October 1995.

PERCENTAGE CHANGE FROM PREVIOUS MONTH  
Trend Estimates

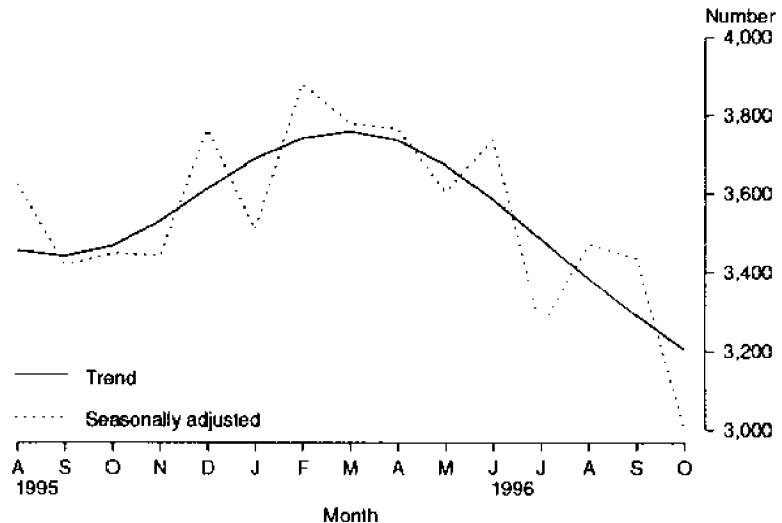


### New Motor Vehicle Registrations

The downward trend for new motor vehicle registrations in South Australia evident since April 1996 continued in October 1996 with a decrease of 2.6% from September 1996. The seasonally adjusted estimate for October 1996 dropped by 12.6% from September 1996 and by 12.9% from October 1995.

In original terms there were 3,360 new motor vehicles registered in October 1996, a decrease of 2.2% from September 1996 and 7.9% from October 1995. For new passenger vehicles, the leading makes registered in October 1996 were Holden (644 vehicles), Ford (637), Mitsubishi (430), Toyota (392) and Hyundai (169).

## NEW MOTOR VEHICLE REGISTRATIONS



## Tourist Accommodation

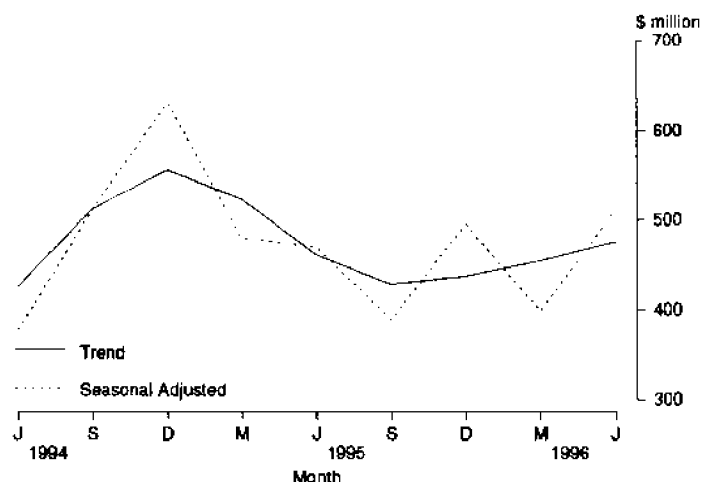
When the September quarter 1996 is compared with the September quarter 1995, the number of rooms available in hotels, motels and guesthouses in South Australia increased from 10,703 to 10,879 while bed spaces increased from 30,227 to 30,848. Room nights occupied fell by 1.1% resulting in an occupancy rate of 48.9%. Regional room occupancy rates ranged from 55.9% in the Adelaide Statistical Division to 39.6% in the South East Statistical Division. Takings from accommodation increased by 1.3% from \$37.1 million to \$37.6 million with average takings per room night occupied rising from \$75 to \$77.

## Private New Capital Expenditure

The trend estimate (in current prices) for private new capital expenditure in South Australia for the June quarter 1996 was \$476 million. The increase of 4.6% from the previous quarter is a continuation of trend growth which commenced in December quarter 1995. The Australian figure rose by 6.6%. The South Australian total for the quarter now represents 4.7% of the Australian figure.

Private new capital expenditure in original terms for the June quarter 1996 was \$513 million, an increase of 36.8% from the March quarter 1996. Buildings and structures accounted for \$108 million, and equipment, plant and machinery \$405 million. Expenditure for the 12 months to June 1996 fell by 15.3% from 12 months to June 1995 with the Australian figure rising by 10.2%.

## PRIVATE NEW CAPITAL EXPENDITURE



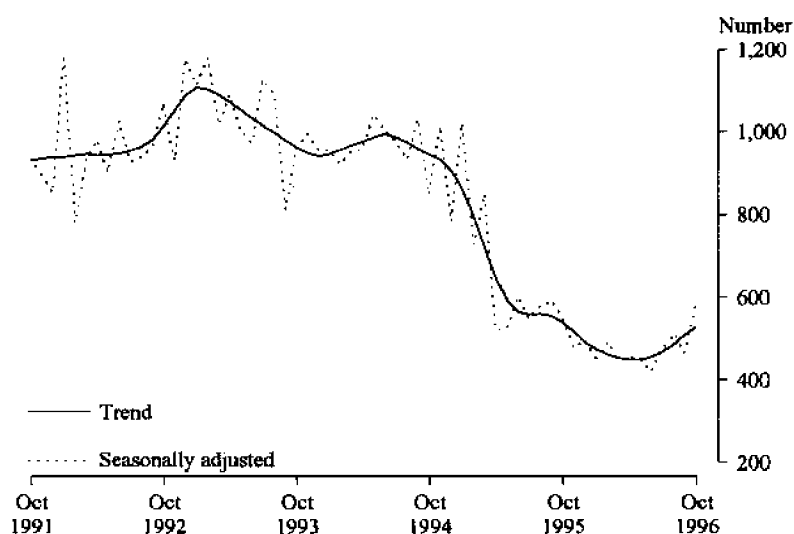
## Production

### Dwelling Approvals

The October 1996 trend estimate for dwelling unit approvals in South Australia continued its upward movement for the fifth consecutive month with a 3.9% increase in September 1996 but was still 2.0% lower than the October 1995 trend estimate. In original terms the number of new private sector houses approved fell by 57 but this was off set by an increase of 97 other residential buildings including one aged care development of 45 dwellings.

The national trend estimate for the total number of dwelling units approved in October 1996 was 0.8% higher than the estimate for September and 2.9% higher than October 1995. In original terms, South Australia accounted for 4.8% of the total dwelling units approved in Australia during October 1996.

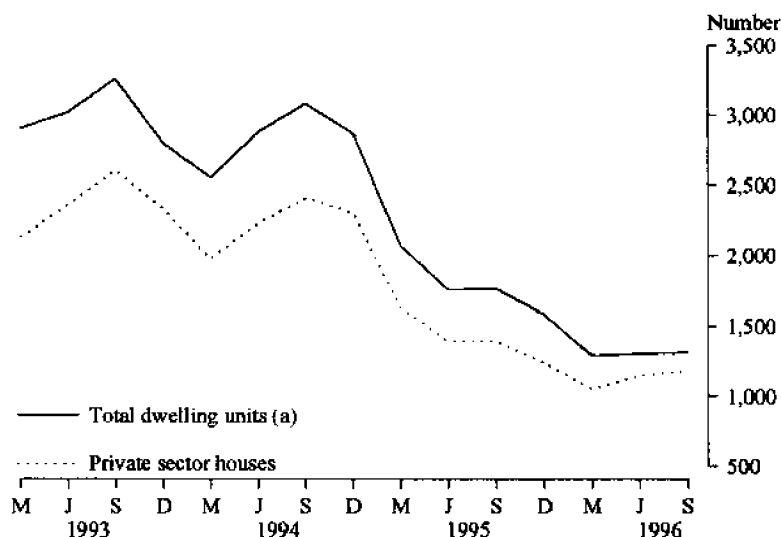
DWELLING UNITS APPROVED



### Dwelling Commencements

For the Building Activity Survey, it was estimated that 1,315 dwelling units were commenced in South Australia during the September quarter 1996. The latest figure for South Australia remained steady compared with a 3.2% fall nationally. The September quarter figure for South Australia was 25.7% below the figure for the September quarter 1995, while the national decrease over the twelve month period was 12.4%.

DWELLING UNITS COMMENCED



(a) Includes Conversions, etc.

**Value of Building Approvals**

The value of new residential building approved in South Australia has remained steady at \$43.7 million for October 1996. This was due to a 11.1% fall in the value of new houses approved to \$35.1 million being balanced by the value of other residential buildings approved more than doubling to \$8.6 million for October.

The value of non-residential building in South Australia has halved falling to \$28.5 million for October 1996.

Overall for October 1996, the value of all buildings approved fell by 25.6% to \$84.2 million from the September 1996 value of \$113.2 million.

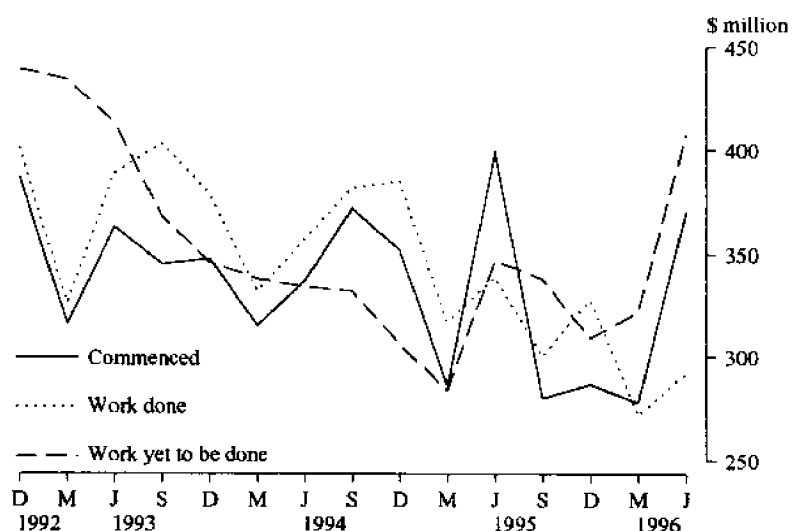
**Value of Total Building Activity**

The total value of building work commenced in South Australia during the June quarter 1996 increased by 33.2% to \$370.9 million. This increase was generally confined to the non-residential building sector (64.8% increase) in particular shops, other business premises and entertainment and recreational categories. South Australia had a 7.0% decrease in building commencements from the June quarter 1995 while the total for Australia showed a 4.0% decrease. The South Australian share of total building commencements was 5.8% for the June quarter 1996.

The total value of building work done during the June quarter 1996 increased by 7.5% to \$292.2 million compared with an increase of 9.2% nationally. Compared with the June quarter 1995, South Australia had a 13.8% decrease in the value of total building work done while the national movement was an 8.0% decrease.

The total value of building work yet to be done in South Australia was \$407.8 million at the end of June 1996, a rise of 26.8% from the previous quarter while the corresponding national figure remained steady. Expressed as a proportion of the national total, the total value of building work yet to be done in South Australia was 4.4% for the June quarter up from the previous quarter of 3.5%.

VALUE OF BUILDING ACTIVITY

**Value of Engineering Construction**

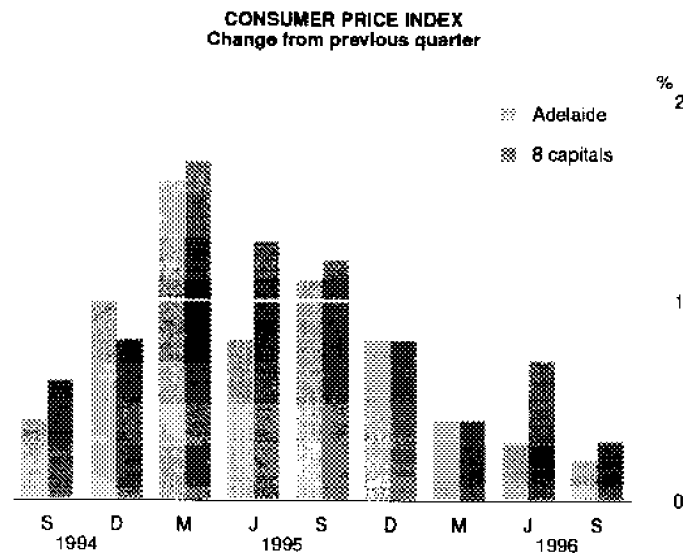
In the June quarter 1996 the value of engineering construction work done in South Australia increased by 13.9% to \$225.7 million compared with a 19.9% increase nationally. South Australia had a 5.5% share of the national total of \$4,114.7 million. The value of work commenced during the quarter fell by 36.1% to \$196.1 million for South Australia while the corresponding national figure fell by 31.4% to \$3,072.4 million. The State's proportion of national commencements was 6.8% for the June quarter 1996.



## Prices

### Consumer Price Index

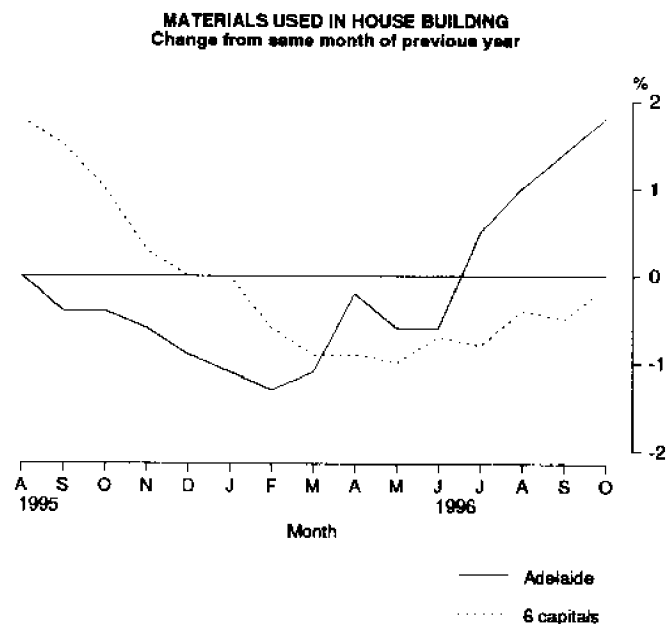
For the September quarter 1996 the Consumer Price Index (all groups) increased 0.2% for Adelaide compared with an increase of 0.3% for the 8 capital cities. These are the lowest quarterly increases recorded since December quarter 1993. The annual increase was 1.7% for Adelaide and 2.1% for the 8 capital cities.



### House Building Materials

The Price Index of Materials used in House Building in Adelaide rose 0.4% for the month of October. This was due to an increase in the prices of ready mixed concrete, plaster products and paint. The Index for the weighted average of the 6 State capitals rose by 0.2%.

For the 12 months to October, the index has shown an increase of 1.8% for Adelaide and the weighted average of the 6 State capitals a decrease of 0.1%.

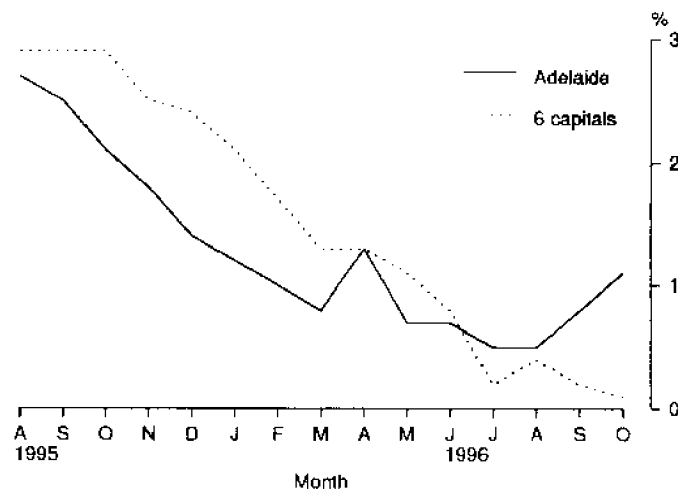


### Non-house Building Materials

Adelaide recorded an increase of 0.4% in the Price Index of Materials used in Building other than House Building due to increases in the prices for ready mixed concrete, reinforcing steel bar and fabric and paint which were slightly off-set by decreases for non-ferrous pipes and fittings resulting from a drop in the world copper prices. For October, the index for the weighted average of the 6 State capitals rose by 0.1%

The index increased 1.1% in Adelaide for the 12 months to October whilst the weighted average of the 6 State capitals rose by 0.1%.

**MATERIALS USED IN BUILDING  
OTHER THAN HOUSE BUILDING**  
Change from Same Month of Previous Year



### House Prices

During the September quarter 1996 the Price Index of Established Houses in Adelaide decreased 0.1% whilst the Project Home Index showed a 0.7% decrease. The weighted average of the 8 capital cities index, over the same period showed a 0.4% increase for established houses and a 0.2% decrease for project houses.

Between September quarter of 1995 and 1996 the Price Index for Established Houses in Adelaide decreased by 2.0% and project homes by 1.7%. Nationally, for the 12 month period established house prices recorded a 1.2% increase and project homes decreased by 0.8%.

### Passenger Transport Costs

The passenger transport cost index measures changes in the costs of operating a public transport passenger bus service in Adelaide. Costs covered include labour costs, leasing charges, registration and insurance, repairs and maintenance, fuel and overheads. The index has been compiled on a quarterly basis from September 1995 with a base of 100.0 in 1993-94. The September quarter 1996 index was 104.1, down from 104.2 in June 1996. The index showed a 1.5% increase in the 12 months to September 1996.

## Labour Force and Demography

### Population

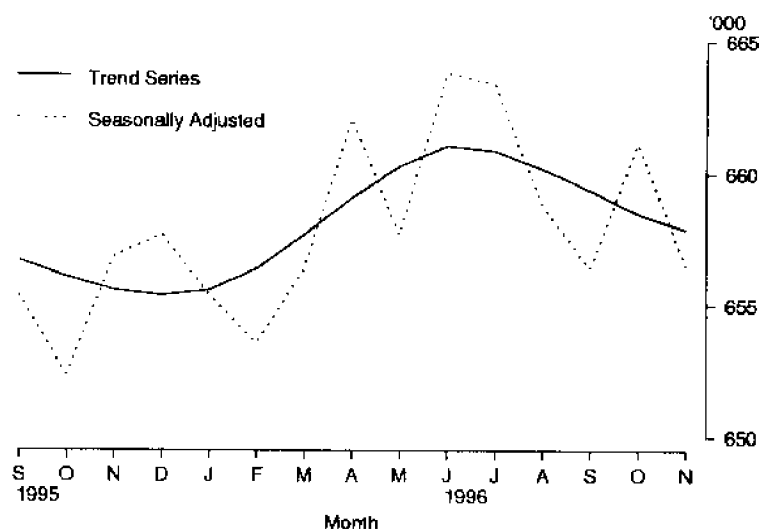
At 30 June 1996 the estimated resident population of South Australia was 1,479,153. This was an increase of 0.1% (1,422) persons from the March quarter. The continuing low growth rate for South Australia is attributable to a net outflow in interstate migration of 1,093 persons which was partly offset by a net inflow of overseas migration of 697 persons. In the June quarter there was a natural increase of 1,818 persons.

### Employment

In the five months to November 1996, the trend estimate of employed persons in South Australia has decreased to 657,900, thus reversing the continuous growth evident in the first half of this year.

In the seven months to November 1996, the trend estimate of employed persons in Australia has increased to 8,383,900, thus reversing the decreases evident in the early part of the year.

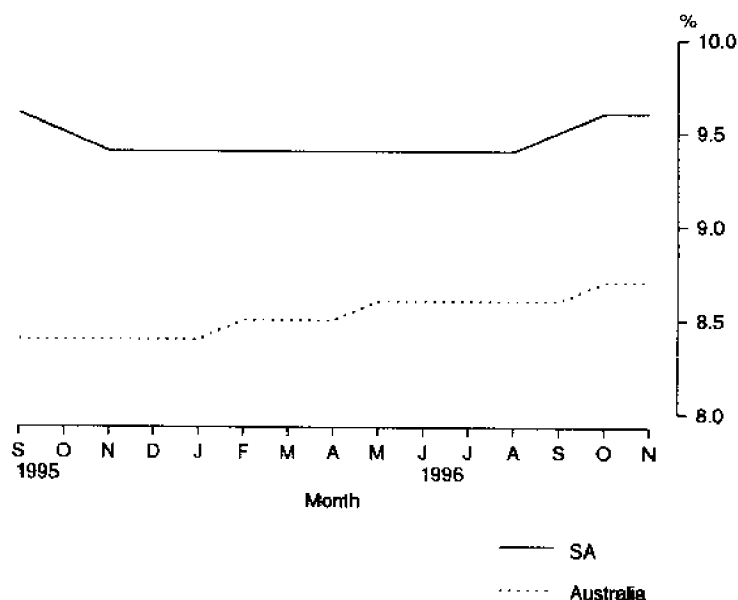
EMPLOYED PERSONS



### Unemployment

After remaining flat in the ten months to August 1996, the trend unemployment rate for South Australia increased to 9.6% in October and remained unchanged in November 1996.

UNEMPLOYMENT RATES  
Trend



The trend unemployment rate for Australia has shown a similar pattern to South Australia rising to 8.7% for October and November 1996.

#### Overtime

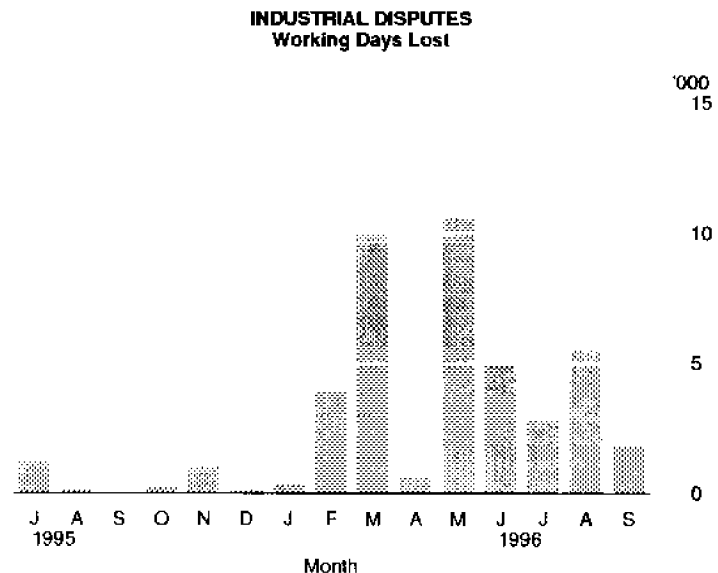
The proportion of employees who worked overtime in South Australia in August 1996 was 14.3%. This was lower than the August 1995 level of 15.9%.

Nationally, the proportion of employees working overtime in August 1996 was 14.9% compared with 16.2% a year earlier.

Employees working overtime in South Australia recorded an average of 6.7 overtime hours per week in August 1996. This was lower than the corresponding national level of 6.8 hours.

#### Industrial Disputes

There were 1,800 working days lost through industrial disputes in South Australia during September 1996. At 5.3% of the national total (34,000 working days lost), South Australia experienced a relatively low level of industrial disputation.



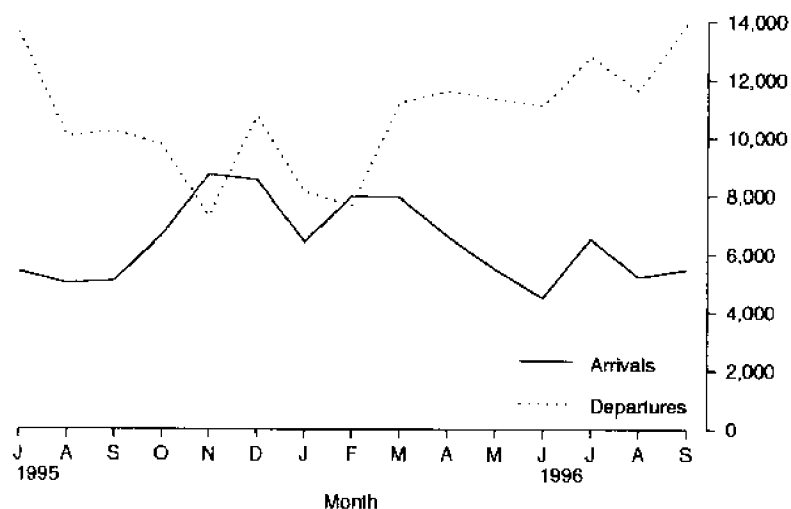
#### Short term Overseas Visitor Arrivals

During September 1996 there were 5,481 short-term visitor arrivals in South Australia bringing the total number of overseas visitors during the nine months from January 1996 to 56,309, an increase of 6.0% over the corresponding period in 1995. In September 1996 the South Australian share of the Australian total was 1.8%.

#### Short term Resident Departures

There were 13,917 short-term resident departures from South Australia during September 1996 bringing the total for the period January to September 1996 to 99,476. This was an increase 7.0% compared with the same period in 1995. South Australian resident departures accounted for 4.9% of the national total in September 1996.

## SHORT TERM OVERSEAS ARRIVALS AND DEPARTURES



## Incomes

### Average Weekly Earnings

The trend estimate of average weekly ordinary time earnings of full-time adult employees in South Australia increased by 0.7% in August 1996. Male full-time ordinary time earnings rose by 0.7% in August 1996. Over the same period, the increase for females was less pronounced; increasing by 0.6%.

Between May 1996 and August 1996, the trend estimate of average weekly total earnings of all employees in South Australia increased from \$528.00 to \$532.00.

Note: Since it is an average of earnings across all employees, changes in average weekly earnings may occur through changes in employment as well as changes in pay levels.

### Award Rates of Pay

In the 12 months to October 1996, the weekly award rates of pay index for full-time employees in South Australia increased by 1.4%. This compares with an increase in the index of 1.3% for Australia.

For full-time adult male employees in South Australia, the largest annual movement of the index occurred in the manufacturing industry division, with an increase of 1.9%.

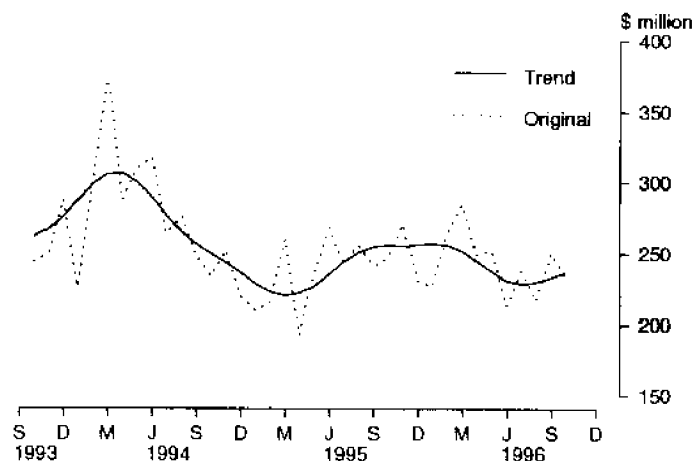
For full-time adult female employees, the largest annual movement of the index occurred in the public administration and defence industry division, with an increase of 3.0%.

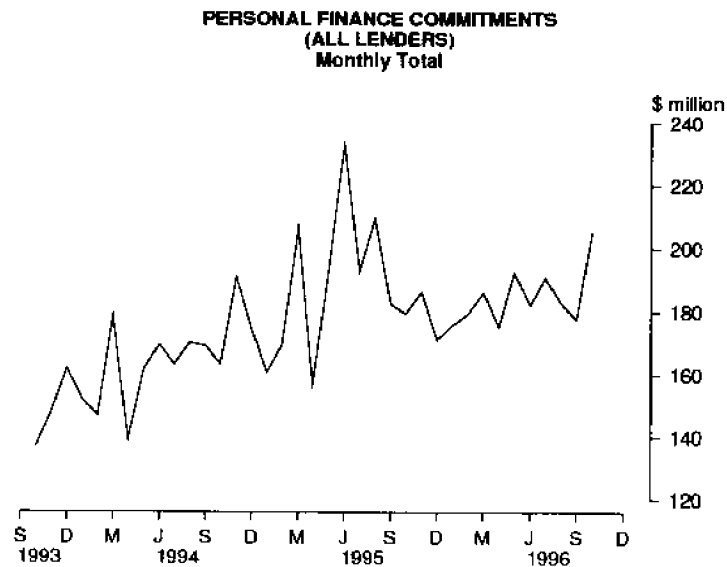
## Financial Markets

### Housing Finance

The trend estimate for the value of owner-occupied housing commitments continued its upward climb with October rising 1.5% to \$237.0 million, however this was still 7.5% below October 1995. The national trend increased 1.7% for the month 11.9% above the previous October.

**SECURED HOUSING FINANCE COMMITMENTS  
TO INDIVIDUALS (ALL LENDERS)  
(Excluding Alterations and Additions)  
Monthly Total**





Used motor vehicles and station wagons, the largest category of fixed loan commitments, increased 13.2% to \$40.1 million and new motor vehicles and station wagons increased 8.1% to \$14.8 million (12.9% above the previous October). Alterations and additions to dwellings were nearly double September's commitments, the highest since April 1989. Refinancing increased 10.9% to \$19.6 million while debt consolidation decreased marginally, one of the few categories that did fall.

Secured commitments under revolving credit facilities increased 27.7% to \$36.7 million, which is more than double the previous October and the highest recorded monthly figure. Unsecured commitments increased 33.0% to \$45.6 million, 5.5% above the previous October.

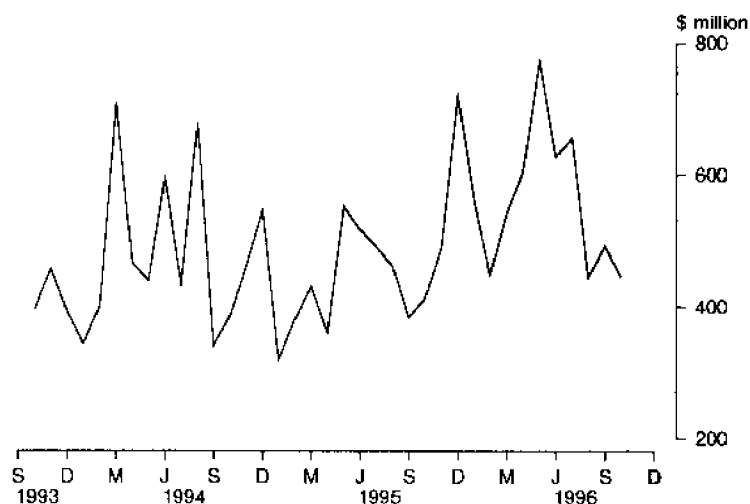
#### Commercial Finance

Total commercial finance commitments decreased 9.4% to \$445.9 million, 8.1% above October 1995. Nationally, commercial finance commitments increased 4.8% during the month, 20.8% higher than the previous October. South Australia's proportion of the national total dropped to 3.9%. Every month for the past year, except August has however been significantly above the corresponding month of the previous year.

Commitments under fixed loan facilities decreased 12.1% to \$273.4 million during October, 8.5% above October 1995. The main decrease was for property and business services, down 47.8% to \$20.3 million following four high months. Significant decreases also occurred for finance, investment and insurance down 48.0% to \$12.7 million and community services down 64.8% to \$6.7 million. Mining increased by \$2.2 million to \$3.9 million, which is its highest month since September 1991.

Revolving credit facilities decreased 4.9% to \$172.6 million, 7.5% above October 1995. The main decrease was for wholesale trade down 68.0% to \$6.1 million, the lowest month since December 1995. The other main decreases were for retail trade and recreation, personal and other services. Construction and property and business services had the main increases.

**COMMERCIAL FINANCE COMMITMENTS**  
Monthly Total



*Lease Finance*

The value of goods under new finance lease commitments decreased 31.2% to \$15.3 million, 18.9% below the previous October. South Australia's proportion of the national total dropped to 2.6%.

The main fall in commitments was for construction and earthmoving equipment, down \$5.2 million following the very high September figure. New motor cars and station wagons not subject to depreciation decreased 19.1% to \$4.2 million for the month and down 14.1% on the previous October to be 2.6% of the national figure. New motor cars and station wagons subject to depreciation decreased 73.5% to be the lowest figure ever recorded for that category.

Used motor cars and station wagons not subject to depreciation had the largest increase among vehicles, up 25.3% to \$2.2 million following the low September amount. Manufacturing equipment quadrupled after two very low months.



## Forward Outlook

### Composite Leading Indicator

The Composite Leading Indicator (CLI) is a single time series produced by aggregating eight individual economic indicators, and has been developed by the ABS as an experimental series to supplement existing forms of economic analysis and modelling.

The CLI summarises the early signals contained in a selection of economic indicators and is designed to assist the detection of turning points between successive expansions and slow downs of economic activity as measured by constant price GDP(A). It does not attempt to forecast the level of economic activity.

In the September quarter 1996 :

- the experimental CLI rose 0.18%, following a 0.31% rise in the June quarter 1996.
- The CLI is showing a trough at the September quarter 1995 followed by strong growth.

The quarterly data are released in more detail in the *Australian Economic Indicators* (1350.0). The CLI was the topic of the Focus article in the September 1993 edition of *South Australian Economic Indicators* (1307.4).

### Australian Business Expectations

Surveys of business expectations have been available to decision makers for a number of years from several sources. These surveys provided *qualitative* indicators in the form of the net proportion of businesses expecting a rise or fall in future business conditions. Since the December quarter 1993, the ABS has been compiling a *quantitative* indicator of business expectations in the form of an expected weighted aggregate change in a range of economic variables. These data are available on a quarterly basis in *Australian Business Expectations* (5250.0).

#### AUSTRALIAN BUSINESS EXPECTATIONS SOUTH AUSTRALIA AND AUSTRALIA SALES OF GOODS AND SERVICES EXPECTED PERCENTAGE AGGREGATE CHANGE

Reference Period	Short term		Medium term	
	Expected aggregate change between		Expected aggregate change between	
	June 1996 and Sep. 1996	Sep. 1996 and Dec. 1996	June 1996 and June 1997	Sep. 1996 and Sep. 1997
	%	%	%	%
South Australia	0.3	2.1	2.3	3.3
Australia	1.6	1.6	3.6	3.1

#### Short term

Businesses in South Australia expect a rise of 2.1% in sales of goods and services in the December quarter 1996 compared with the September quarter while the national expectation was a 1.6% increase.

#### Medium term

Businesses in South Australia expect sales of goods and services in the September quarter 1997 to be 3.3% above September quarter 1996. Australia wide the expectation was for 3.1% growth.

# STATISTICAL SUMMARY

Indicator		Period	SOUTH AUSTRALIA			AUSTRALIA			SA as a % of Australia	Source index
			No.	% change from		No.	% change from			
				Previous period	Same period previous year		Previous period	Same period previous year		
State Accounts										
Gross domestic product (I)										
Current prices	\$m	Jun. qtr 96	8,710	3.7	5.8	122,332	3.2	6.5	7.1	1
1989-90 prices trend	\$m	Jun. qtr 96	7,607	0.7	4.7	109,367	0.7	4.2	7.0	1
Wages, salaries and supplements										
Current prices trend	\$m	Jun. qtr 96	4,391	0.8	4.8	61,122	1.2	6.2	7.2	1
Private final consumption expenditure										
Current prices	\$m	Jun. qtr 96	5,722	3.1	3.8	76,344	3.6	6.2	7.5	1
1989-90 prices trend	\$m	Jun. qtr 96	4,946	0.4	2.1	66,217	0.8	4.3	7.5	1
Private gross fixed capital expenditure										
1989-90 prices trend	\$m	Jun. qtr 96	945	2.8	-1.2	18,661	1.8	3.0	5.1	1
International Accounts										
Exports (excluding re-exports)	\$m	Oct. 96	423.9	35.0	39.2	6,393.2	7.9	8.0	6.6	2
Imports	\$m	Oct. 96	284.8	-1.9	10.7	7,284.3	16.0	4.8	3.9	2
Consumption and Investment										
Retail Turnover										
Current prices original	\$m	Oct. 96	771.8	7.7	-0.3	10,435.6	8.4	5.1	7.4	3
Current prices trend	\$m	Oct. 96	759.8	-0.8	-1.6	10,226.6	-0.2	2.7	7.4	3
1989-90 prices original	\$m	Sep. qtr 96	1,853.0	-1.3	-1.8	24,992.0	0.4	2.0	7.4	3
New motor vehicle registrations										
Original	No.	Oct. 96	3,360	-2.2	-7.9	55,721	9.0	4.2	6.0	4
Trend	No.	Oct. 96	3,206	-2.6	-7.5	52,657	-1.3	3.3	6.1	4
Takings, licensed hotels, motels and guest houses with facilities										
	\$m	Sep. qtr 96	37.6	-4.0	1.3	897.1	7.3	5.3	4.2	5
Private new capital expenditure										
Current prices original	\$m	Jun. qtr 96	513	36.8	3.8	11,129	33.4	18.5	4.6	6
Current prices trend	\$m	Jun. qtr 96	476	4.6	8.7	10,228	6.6	15.3	4.7	6
Private new capital expenditure										
	\$m	1995-96	1,783	..	-15.3	37,829	..	10.2	4.7	6
Expected private new capital expenditure										
	\$m	1996-97	1,491	..	-20.2	39,478	..	3.1	3.8	6
Production										
Dwelling unit approvals										
Original	No.	Oct. 96	566	10.1	9.1	11,817	18.0	15.4	4.8	7
Trend	No.	Oct. 96	529	3.9	-2.0	10,622	0.8	2.9	5.0	7
New dwelling units commenced										
	No.	Sep. qtr 96	1,315	0.5	-25.7	29,993	-3.2	-12.4	4.4	8a
Value of non-residential building approvals										
	\$m	Oct. 96	28.5	-51.8	-58.8	1,384.5	21.6	19.1	2.1	7
Value of total building activity										
Commenced	\$m	Jun. qtr 96	370.9	33.2	-7.0	6,413.7	-2.3	-4.0	5.8	8
Work done	\$m	Jun. qtr 96	292.2	7.5	-13.8	6,522.4	9.2	-8.0	4.5	8
Work yet to be done	\$m	Jun. qtr 96	407.8	26.8	17.6	9,177.1	0.6	-4.0	4.4	8
Value of engineering construction work done										
	\$m	Jun. qtr 96	225.7	13.9	11.5	4,114.7	19.9	10.4	5.5	9
Manufacturing production										
Electricity (SA and NT)	mill. kWh	Oct. 96	702	-1.9	4.5	14,232	3.7	3.8	4.9	10
Cheese	tonnes	Sep. 96	5,163	61.8	57.4	28,873	64.5	-7.2	17.9	10
Red meat	tonnes	Oct. 96	18,211	21.8	-13.3	220,898	11.7	0.3	8.2	11
Mineral exploration expenditure (other than for petroleum)										
	\$m	Jun. qtr 96	6.8	33.3	3.0	284.9	30.1	16.5	2.4	12

Indicator		Period	SOUTH AUSTRALIA			AUSTRALIA			SA as a % of Australia	Source index
			No.	% change from		No.	% change from			
				Previous period	previous year		Previous period	previous year		
<b>Prices</b>										
CPI - All groups	1989-90=100	Sep. qtr 96	122.2	0.2	1.7	120.1	0.3	2.1	..	13
Price index of materials used in house building	1989-90=100	Oct. 96	120.3	0.4	1.8	115.7	0.2	-0.1	..	14
Price index of materials used in building other than houses	1989-90=100	Oct. 96	113.8	0.4	1.1	112.8	0.1	0.1	..	15
Price index of established houses	1989-90=100	Sep. qtr 96	107.8	-0.1	-2.0	114.0	0.4	1.2	..	16
Price index of project homes	1989-90=100	Sep. qtr 96	111.3	-0.7	-1.7	109.4	-0.2	-0.2	..	16
<b>Labour Force and Demography</b>										
Population (resident at end qtr)	'000	Jun. qtr 96	1,479.2	0.1	0.4	18,286.3	0.3	1.3	8.1	17
Labour force										
Original	'000	Nov. 96	723.7	-0.4	0.3	9,129.6	-0.3	0.7	7.9	18
Trend	'000	Nov. 96	727.8	0.0	0.6	9,181.1	0.1	1.2	7.9	18
Employed persons										
Original	'000	Nov. 96	657.4	-0.3	-0.1	8,392.4	0.0	0.8	7.8	18
Trend	'000	Nov. 96	657.9	-0.1	0.4	8,383.9	0.1	1.0	7.8	18
Participation rate										
Original (a)	%	Nov. 96	61.4	-0.5	-0.3	63.2	-0.3	-0.6	..	18
Trend (a)	%	Nov. 96	61.7	-0.2	0.0	63.6	0.0	-0.2	..	18
Unemployment rate										
Original (a)	%	Nov. 96	9.2	-1.1	3.4	8.1	-0.3	0.0	..	18
Trend (a)	%	Nov. 96	9.6	0.0	2.1	8.7	0.0	0.3	..	18
Job vacancies	'000	Aug. 96	5.0	108.3	100.0	63.5	18.5	2.4	7.9	19
Average weekly overtime per employee working overtime	hours	Aug. 96	6.7	1.5	2.4	6.8	-7.0	-0.6	..	19
Industrial disputes	'000 working days lost	Sep. 96	1.8	-67.3	..	34.0	-71.5	-15.6	5.3	20
Short-term overseas visitors arrivals	No.	Sep. 96	5,481	4.5	7.6	309,155	-6.1	21.6	1.8	21
Short-term resident departures	No.	Sep. 96	13,917	19.7	35.7	281,523	26.6	4.8	4.9	21
<b>Incomes</b>										
Average weekly earnings (full-time adults; ordinary time)										
Original	\$	Aug. 96	632.40	-0.2	3.0	676.40	0.6	3.8	..	22
Trend	\$	Aug. 96	636.00	0.7	3.5	677.90	1.0	3.7	..	22
Award rates of pay index (full-time adults, weekly)	Jun.1985=100	Oct. 96	149.4	0.1	1.4	146.7	0.1	1.2	..	23
<b>Financial markets</b>										
Secured housing finance	\$m	Oct. 96	247.6	-8.3	-7.1	4,333.0	0.7	11.2	5.7	24
Finance commitments										
Personal	\$m	Oct. 96	205.3	15.6	14.5	3,065.4	11.7	14.5	6.7	25
Commercial	\$m	Oct. 96	445.9	-9.4	8.1	11,552.9	4.8	20.8	3.9	25
Lease	\$m	Oct. 96	15.3	-31.2	-18.9	591.2	3.4	10.2	2.6	25
Interest rates										
Banks new housing loans (a)	%	Nov. 96	..	..	..	8.75	-0.5	-1.8	..	26
Banks business loans (a)										
small, medium sized business	%	Nov. 96	..	..	..	10.75	0.0	-0.4	..	26
large business	%	Nov. 96	..	..	..	10.05	-0.2	-0.6	..	26

(a) Change is shown in terms of percentage points.

## FOCUS

### South Australian Agriculture, Finance Statistics

*This article was contributed by the Economic Statistics Unit, ABS, Adelaide.*

#### Introduction

Since 1986-87 an Agricultural Finance Survey (AFS) has been conducted Australia-wide with the aim of providing financial statistical information that allows analysis of the structure of the agriculture sector. It also provides users with a comprehensive range of agricultural financial statistics to allow comparative analysis of the economic performance of the various agricultural industries.

The survey forms part of the ABS Economy Wide Surveys Program that provides a wide range of financial and structural information about each of Australia's economic sectors.

#### Survey Results

While these 1994-95 results are the most detailed available for the agriculture sector it should be recognised that the survey cannot be completed until farm accounts are finalised. Aggregate preliminary estimates of value of production made from the 1995-96 Agricultural Census are available. These show the gross value of agricultural commodities produced in South Australia increasing 34.0% from \$2,464.6 million in 1994-95 to \$3,299.9 million in 1995-96. This rise was driven by good prices for an increased cereal harvest with the gross value of crops increasing 55.1%, from \$1,493.1 million to \$2,315.7 million.

#### Turnover

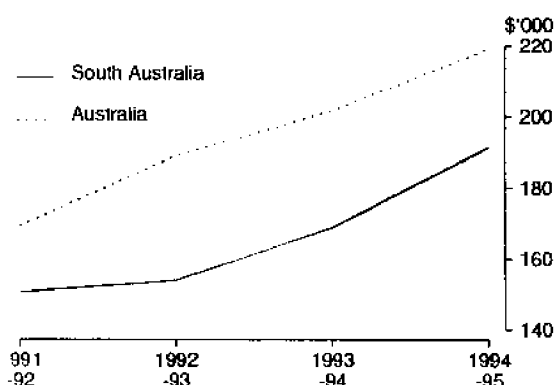
The estimated South Australian turnover for the agricultural industry rose to \$2,353.8 million in 1994-95, an increase of \$306.6 million (15.0%) from 1993-94.

This compares favourably with the national turnover for agriculture which rose \$1,822.0 million (8.4%) to reach a level of \$23,516.3 million in 1994-95. Turnover in South Australia made up 10.0% of the national total.

The main industries in terms of turnover during 1994-95 for South Australia were grain (\$554.6 million, down 16.2% and nationally down 20.6%), grain-sheep/beef (\$490.9 million, up 93.6% and nationally up 20.2%) and fruit (\$334.2 million, up 50% and 19% nationally). The vegetable industry recorded a significant increase of \$83.6 million (64.6% and 23.0%). The graph indicates the average turnover for selected industries in South Australia compared with Australia.

In 1994-95, the average turnover per farm business in South Australia increased \$22,700 (13.4%) to \$191,600 compared with the national figure of \$219,200 (up 8.7%). These increases in average turnover continue an upward trend evident from the graph below.

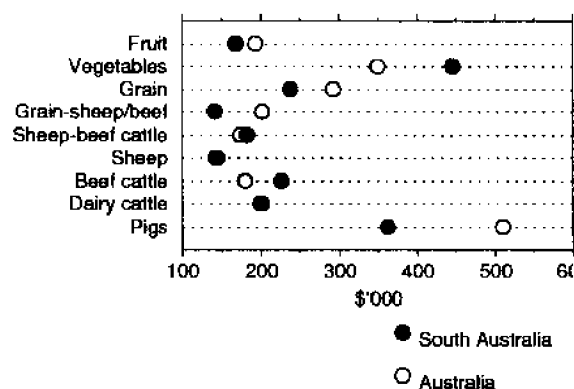
AVERAGE TURNOVER PER FARM BUSINESS



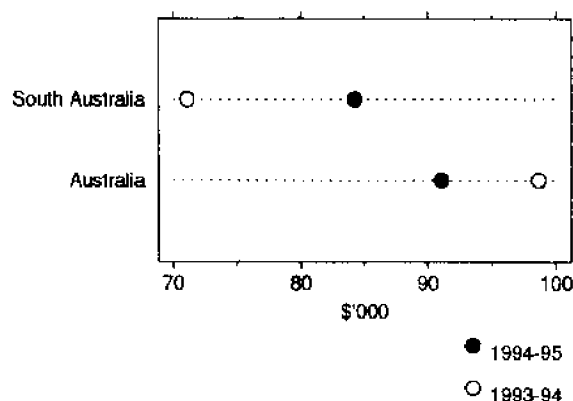
#### Value Added

The average value added contributed to the South Australian economy by farm businesses in the agricultural industry for 1994-95 was \$84,200. This was \$13,100 (18.4%) above the 1993-94 figure. Over the same period average value added for the Australian economy fell \$7,600 (7.7%) to \$91,000 partly as a result of the drought experienced in the eastern States.

AVERAGE TURNOVER OF AGRICULTURAL INDUSTRIES  
1994-95



AVERAGE VALUE ADDED

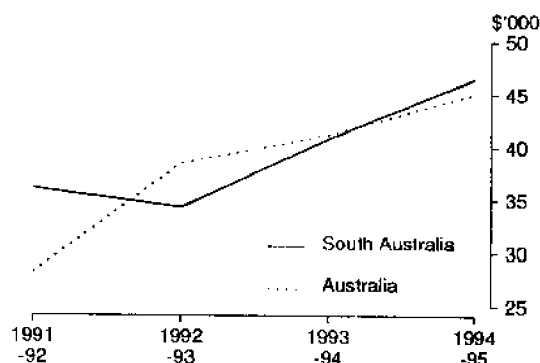


### Cash Operating Surplus

The aggregate cash operating surplus for South Australia rose from \$491.4 million in 1993-94 to \$570.7 million in 1994-95, an increase of 16.1%. This is significant when compared with the surplus for Australia which rose by 9.1% to \$4,835.7 million. The largest component of the surplus for South Australia was grain (\$150.6 million) which fell by 16.6% from the 1993-94 figure. Grain-sheep/beef recorded a 132.6% increase over the twelve months to reach \$102.8 million. Some of this movement can be attributed to movement of farm businesses between industries.

The average cash operating surplus per farm business for South Australia was \$46,500 (up 14.0%) for 1994-95, \$1,400 higher than the Australian average of \$45,100 (up 9.5%).

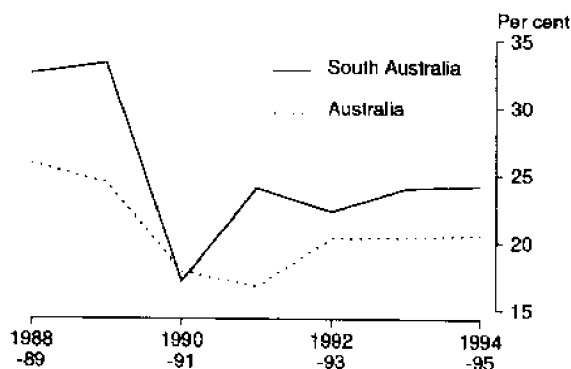
AVERAGE CASH OPERATING SURPLUS  
PER FARM BUSINESS



### Profit Margins

Farm businesses in South Australia recorded an increase in profit margins of 0.2% to reach a level of 24.2% in 1994-95. South Australia ranked second only to Western Australia in farm business profit margins for the twelve months. The national farm business profit margin in 1994-95 was 20.6% marginally larger than the 1993-94 figure of 20.4%.

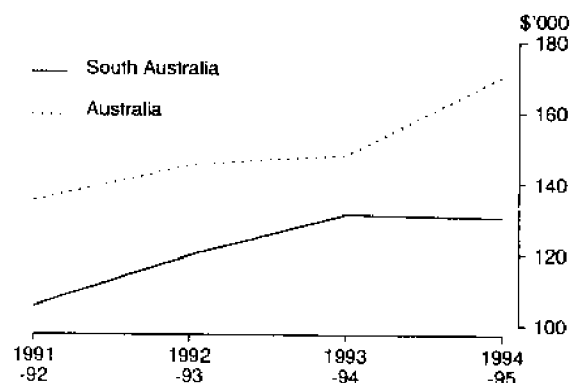
PROFIT MARGINS PER FARM BUSINESS



### Gross and net indebtedness

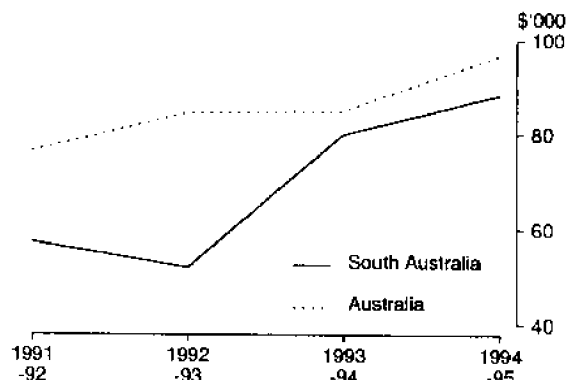
The average gross indebtedness per farm business at the end of 1994-95 for South Australia was \$130,600 a decrease of \$700 (0.5%). Apart from South Australia and Tasmania all other States recorded significant increases in average gross indebtedness up to the end of 1994-95 with the national average increasing from \$148,100 to \$170,300 (15.0%).

AVERAGE GROSS INDEBTEDNESS



The level of South Australian average net indebtedness increased by \$8,400 (10.5%) to \$88,300. This meant that South Australia had the second lowest level of debt per farm business of all the States. Nationally the level of net indebtedness climbed to \$96,800 in 1994-95, an increase of \$11,800 (14.5%).

AVERAGE NET INDEBTEDNESS



At the end of 1994-95, South Australian farm businesses owed \$1,604.7 million. This was \$12.9 million above the level of debt at the end of 1993-94. Net indebtedness (gross indebtedness less the value of financial assets) was \$1,085.0 million, \$116.8 million higher than in 1993-94.

Gross indebtedness nationally increased by \$2,346 million (14.7%) to reach \$18,267.7 million while aggregate net indebtedness increased to \$10,385.8 million (up 13.6%).

The grain industry in South Australia had a fall in net indebtedness (10.0%) and gross indebtedness (28.0%) in 1994-95. This can be contrasted with the grain-sheep/beef industry where the aggregate level of indebtedness rose significantly. The gross indebtedness increased to \$322.5 million (130.8%) while the net indebtedness moved to \$253.7 million (up 162.6%). Some of this movement can be attributed to movement of farm businesses between industries.

### Interest Coverage Ratio

The interest coverage ratio (how many times the interest bill could be paid from cash operating surplus before deducting interest payments) was 4.8 for South Australia in 1994-95 compared with 5.2 for 1993-94. This was 0.6 higher than the national interest coverage ratio of 4.2. The table below shows the full set of figures since 1989-90 for the interest coverage ratio. The ratio has been higher in South Australia than Australia in all but one of the past six years.

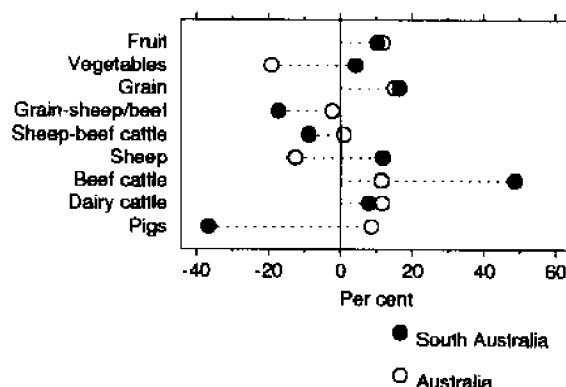
	South Australia	Australia
1989-90	4.4	3.4
1990-91	2.4	2.7
1991-92	3.9	2.7
1992-93	3.9	3.7
1993-94	5.2	4.4
1994-95	4.8	4.2

### Net Worth

The average net worth of all farm businesses in South Australia was \$781,800 at the end of 1994-95, an increase of \$11,300 (1.5%) on the 1993-94 average net worth value. For Australia average net worth increased by \$32,500 (3.5%) to \$968,700.

The average net worth for beef cattle in South Australia has increased by 48.7% in 1994-95 to \$1.9 million. In Australia there has been only an 11.3% increase for beef cattle. The other significant change in average net worth for South Australia has been in the pig industry with a fall of 36.6% to a new level of \$726,600. Further industry comparisons for average net worth are shown in the graph below.

PERCENTAGE CHANGE IN NET WORTH  
1993-94 AND 1994-95



### OTHER SURVEY INFORMATION

#### Sample design constraints

- \* The relative standard error (RSE) of estimates of total industry turnover at the Australian level will not exceed 2%;
- \* the RSE of estimates of industry turnover at the Australian level will not exceed 10%;
- \* the RSE of estimates of total industry turnover at the State level will not exceed 5%.

Estimates are produced for all items by industry at the Australian and State levels.

#### Data Collection

Total sample size is 2,500 farm businesses and is allocated across each State and agricultural industry according to RSE constraints described above.

Data are collected using a combination of self enumeration (ie a form is posted out to respondents for completion) and personal interview by trained interviewer staff. The self-enumeration component of the sample consists principally of remote units (ie those in difficult to access regions), very large business units with accounting systems set up to readily provide data and units that prefer to receive a questionnaire rather than take part in an interview.

Of the 2,500 units, 2,100 are collected by field interview. An average interview lasts around two to three hours and draws extensively upon farm accounting records.

A total of about 250 income, expense, debt and asset value items are asked. The questions include details of:

- \* proceeds from sale of crops (barley, rice, wheat, cotton, sugar, fruit, etc), livestock (beef cattle, dairy cattle, sheep and lambs, pigs, poultry, goats and other livestock), livestock products (wool, milk, eggs, other) and other income;
- \* expenses directly associated with raising livestock and growing crops;
- \* other expenses (eg marketing costs, fuels, insurance, leasing costs, repair and maintenance, wages and salaries, administrative costs, etc);
- \* acquisition and disposal of assets;
- \* farm debt and debt source;
- \* farm capital expenditure;
- \* expenditure on land management and other environment related issues.

#### Data Organisation

Standard aggregate financial measures collected or derived in other ABS economic statistical collections can be derived from the items collected. Measures such as turnover, value added, adjusted value added, gross operating surplus and cash operating surplus can be calculated along with a range of performance indicators such as profit margin and return on operating costs. In addition, information about labour, indebtedness, asset value and expenditure on land management and related matters are collected.

The major published variables are:

Sales from crops  
 Sales from livestock  
 Sales from livestock products  
 Turnover  
 Purchases and selected expenses  
 Value added  
 Adjusted value added  
 Gross operating surplus  
 Total interest paid  
 Cash operating surplus  
 Total net capital expenditure  
 Total value of assets  
 Gross indebtedness  
 Net indebtedness  
 Net worth  
 Principal performance ratios derived and published include:  
 Profit margin  
 Return on assets  
 Debt to asset ratio  
 Turnover to debt ratio  
 Interest coverage ratio

The information is available in summary form in printed publications and in detailed form electronically. Detailed data item estimates are available at the Australian and State levels and limited regional data are available. As the geographic level becomes finer the RSE's of estimates increase significantly and hence, should be used with caution. Upon request the ABS can produce output, as hard copy or electronically, according to client specification.

The data enables analysis of debt structure, return on assets, operating costs, profitability, debt to equity, interest coverage (i.e. the capacity for farms businesses to pay their interest bill), capital replacement and expenditure. Analyses can be done for the farm sector in total or for individual industries, at the Australian and/or State levels.

Industries for which data are available are:

Fruit (ANZSICs 0114 to 0119)  
 Vegetables (ANZSIC 0113)  
 Grain (ANZSIC 0121)  
 Grain-sheep-beef (ANZSIC 0122)  
 Sheep-beef cattle (ANZSIC 0123)  
 Sheep (ANZSIC 0124)  
 Beef cattle (ANZSIC 0125)  
 Dairy cattle (ANZSIC 0130)  
 Pigs (ANZSIC 0151)  
 Sugar (ANZSIC 0161)  
 Cotton (ANZSIC 0162)  
 Other agriculture (ANZSICs 0111, 0112, 0152 to 0159, 0169)

### **Publications**

Preliminary data are published in *Agricultural Industries Financial Statistics, Australia, Preliminary* (7506.0) in January each year.

Final results are published in *Agricultural Industries Financial Statistics, Australia* (7507.0) released about July each year.

Comparative statistics for other industries are published in *Business Operations and Industry Performance* (8140.0) annually.

For further information about the survey, or availability of data contact Frank McCallum on (03) 6220 5939.

### **References**

*Agricultural Industries Financial Statistics, Australia* (7507.0)

*Value of Agricultural Commodities Produced, Australia* (7503.0)

*Value of Principal Agricultural Commodities Produced, Australia 1995-96, Preliminary* (7501.0)

# TIME SERIES

## STATE ACCOUNTS AT CURRENT PRICES South Australia

Period	Final consumption expenditure		Gross fixed capital expenditure		State final demand	Gross State product (f)	Wages, salaries and supplements
	Private	Public	Private	Public			
ANNUAL (\$ million)							
1985-86	11,581	3,860	3,162	1,266	19,869	19,301	9,946
1986-87	12,470	4,203	3,255	1,287	21,215	20,609	10,602
1987-88	13,748	4,392	3,964	1,196	23,300	22,828	11,230
1988-89	15,248	4,649	4,151	1,429	25,477	25,526	12,546
1989-90	16,474	5,003	4,488	1,577	27,542	27,969	13,954
1990-91	18,122	5,477	4,234	1,529	29,362	28,429	14,746
1991-92	18,958	5,812	4,021	1,429	30,220	28,719	14,718
1992-93	19,487	5,983	3,972	1,354	30,796	30,149	15,283
1993-94	20,437	6,687	3,957	1,185	32,266	31,951	16,258
1994-95	21,742	6,780	4,878	1,222	34,622	33,030	16,461
1995-96	23,058	6,598	4,003	1,212	34,871	35,192	17,309
PERCENTAGE CHANGE FROM PREVIOUS YEAR							
1986-87	7.7	8.9	2.9	1.7	6.8	6.8	6.6
1987-88	10.2	4.5	21.8	-7.1	9.8	10.8	5.9
1988-89	10.9	5.9	4.7	19.5	9.3	11.8	11.7
1989-90	8.0	7.6	8.1	10.4	8.1	9.6	11.2
1990-91	10.0	9.5	-5.7	-3.0	6.6	1.6	5.7
1991-92	4.6	6.1	-5.0	-6.5	2.9	1.0	-0.2
1992-93	2.8	2.9	-1.2	-5.2	1.9	5.0	3.8
1993-94	4.9	11.8	-0.4	-12.5	4.8	6.0	6.4
1994-95	6.4	1.4	23.3	3.1	7.3	3.4	1.2
1995-96	6.1	-2.7	-17.9	-0.8	0.7	6.5	5.2
QUARTERLY, ORIGINAL (\$ million)							
1993 - 94 -							
December	5,378	1,627	1,008	302	8,315	8,431	4,094
March	4,964	1,505	932	257	7,658	7,785	3,919
June	5,072	1,926	1,042	368	8,408	7,992	4,194
1994 - 95 -							
September	5,295	1,655	1,161	244	8,355	8,096	4,115
December	5,659	1,700	1,567	292	9,218	8,720	4,073
March	5,277	1,559	1,045	320	8,201	7,984	4,050
June	5,511	1,866	1,105	366	8,848	8,230	4,223
1995 - 96 -							
September	5,693	1,653	895	224	8,465	8,211	4,199
December	6,095	1,635	1,133	263	9,126	9,875	4,455
March	5,548	1,515	895	292	8,250	8,396	4,232
June	5,722	1,795	1,080	433	9,030	8,710	4,423
QUARTERLY, TREND (\$ million)							
1993 - 94 -							
December	5,092	1,631	969	303	7,955	7,918	4,017
March	5,145	1,678	970	292	8,085	8,031	4,075
June	5,201	1,695	1,078	282	8,256	8,136	4,102
1994 - 95 -							
September	5,272	1,714	1,226	314	8,505	8,189	4,087
December	5,371	1,712	1,295	317	8,692	8,198	4,077
March	5,490	1,695	1,211	294	8,713	8,256	4,116
June	5,611	1,681	1,063	276	8,649	8,399	4,189
1995 - 96 -							
September	5,703	1,674	983	276	8,636	8,596	4,260
December	5,748	1,667	994	290	8,699	8,750	4,309
March	5,780	1,650	1,007	318	8,755	8,860	4,357
June	5,812	1,627	1,023	336	8,798	8,932	4,391
PERCENTAGE CHANGE FROM PREVIOUS QUARTER, TREND							
1993 - 94 -							
March	1.0	2.9	0.1	-3.6	1.6	1.4	1.4
June	1.1	1.0	11.1	-3.4	2.1	1.3	0.7
1994 - 95 -							
September	1.4	1.1	13.7	11.3	3.0	0.7	-0.4
December	1.9	-0.1	5.6	1.0	2.2	0.1	-0.2
March	2.2	-1.0	-6.5	-7.3	0.2	0.7	1.0
June	2.2	-0.8	-12.2	-6.1	-0.7	1.7	1.8
1995 - 96 -							
September	1.6	-0.4	-7.5	0.0	-0.2	2.3	1.7
December	0.8	-0.4	1.1	5.1	0.7	1.8	1.2
March	0.6	-1.0	1.3	9.7	0.6	1.3	1.1
June	0.6	-1.4	1.6	5.7	0.5	0.8	0.8



**STATE ACCOUNTS AT AVERAGE 1989-90 PRICES**  
**South Australia**

Period	Final consumption expenditure		Gross fixed capital expenditure		State final demand	Gross State product (I)
	Private	Public	Private	Public		
ANNUAL (\$ million)						
1985-86	14,991	4,687	3,858	1,514	25,050	24,974
1986-87	14,958	4,850	3,621	1,442	24,871	25,260
1987-88	15,451	4,877	4,247	1,304	25,879	25,959
1988-89	16,084	4,879	4,279	1,500	26,742	26,720
1989-90	16,474	5,003	4,488	1,577	27,542	27,969
1990-91	17,169	5,210	4,093	1,480	27,592	27,697
1991-92	17,447	5,328	3,849	1,364	27,988	27,023
1992-93	17,486	5,376	3,686	1,277	27,825	28,077
1993-94	18,036	5,711	3,601	1,120	28,468	29,004
1994-95	18,904	5,837	4,446	1,150	30,337	28,747
1995-96	19,861	5,599	3,644	1,133	30,057	30,108
PERCENTAGE CHANGE FROM PREVIOUS YEAR						
1986-87	-0.2	3.5	-6.1	-4.8	-0.7	1.1
1987-88	3.3	0.6	17.3	-9.6	4.1	2.8
1988-89	4.1	0.0	0.8	15.0	3.3	2.9
1989-90	2.4	2.5	4.9	5.1	3.0	4.7
1990-91	4.2	4.1	-8.8	-6.2	0.2	-1.0
1991-92	1.6	2.3	-6.0	-7.8	1.4	-2.4
1992-93	0.2	0.9	-4.2	-6.4	-0.6	3.9
1993-94	3.1	6.2	-2.3	-12.3	2.3	3.3
1994-95	4.8	2.2	23.5	2.7	6.6	-0.9
1995-96	5.1	-4.1	-18.0	-1.5	-0.9	4.7
QUARTERLY, ORIGINAL (\$ million)						
1993 - 94 -						
December	4,749	1,385	920	284	7,338	7,872
March	4,378	1,323	844	246	6,791	7,007
June	4,456	1,605	938	348	7,347	7,054
1994 - 95 -						
September	4,637	1,423	1,055	232	7,347	7,071
December	4,937	1,447	1,460	278	8,122	7,710
March	4,568	1,370	936	298	7,172	6,865
June	4,762	1,597	995	342	7,696	7,101
1995 - 96 -						
September	4,878	1,403	813	211	7,305	7,072
December	5,206	1,395	1,004	247	7,852	8,484
March	4,721	1,291	821	273	7,106	7,152
June	4,876	1,510	1,006	402	7,794	7,400
QUARTERLY, TREND (\$ million)						
1993 - 94 -						
December	4,488	1,411	885	287	7,086	7,243
March	4,518	1,447	880	278	7,129	7,256
June	4,561	1,458	976	268	7,259	7,242
1994 - 95 -						
September	4,620	1,447	1,121	277	7,478	7,187
December	4,684	1,480	1,186	297	7,640	7,131
March	4,762	1,483	1,101	297	7,629	7,160
June	4,843	1,436	956	275	7,525	7,265
1995 - 96 -						
September	4,897	1,429	880	259	7,466	7,395
December	4,914	1,416	896	271	7,492	7,483
March	4,928	1,398	919	297	7,535	7,554
June	4,946	1,357	945	311	7,577	7,607
PERCENTAGE CHANGE FROM PREVIOUS QUARTER, TREND						
1993 - 94 -						
March	0.7	2.6	-0.6	-3.1	0.6	0.2
June	1.0	0.8	10.9	-3.6	1.8	-0.2
1994 - 95 -						
September	1.3	-0.8	14.9	3.4	3.0	-0.8
December	1.4	2.3	5.8	7.2	2.2	-0.8
March	1.7	0.2	-7.2	0.0	-0.1	0.4
June	1.7	-3.2	-13.2	-7.4	-1.4	1.5
1995 - 96 -						
September	1.1	-0.5	-7.9	-5.8	-0.8	1.8
December	0.3	-0.9	1.8	4.6	0.3	1.2
March	0.3	-1.3	2.6	9.6	0.6	0.9
June	0.4	-2.9	2.8	4.7	0.6	0.7

**MERCHANDISE EXPORTS BY SELECTED COMMODITY GROUP**  
**Final stage of production in South Australia**  
**(\$'000)**

<i>Period</i>	<i>Meat and meat preparations</i>	<i>Cereals and cereal preparations</i>	<i>Wine</i>	<i>Wool and sheepskins</i>	<i>Machinery</i>	<i>Metals and metal manufactures</i>	<i>Fish and crustaceans</i>	<i>Road vehicles, parts and accessories</i>	<i>Petroleum and petroleum products</i>	<i>Total</i>
<b>ANNUAL</b>										
1988-89	181,058	475,481	71,474	415,098	104,163	239,656	95,720	124,815	189,679	2,451,372
1989-90	244,374	724,369	73,484	285,550	111,944	371,136	111,760	161,704	188,105	2,828,091
1990-91	234,299	587,199	123,567	257,576	152,940	433,341	122,604	117,218	291,507	3,007,137
1991-92	270,237	565,582	165,914	351,096	176,536	489,030	147,532	137,091	341,477	3,431,139
1992-93	282,181	573,375	192,255	318,989	211,426	490,594	154,608	338,359	372,445	3,760,602
1993-94	324,796	436,517	238,366	290,963	223,760	462,355	186,861	351,229	276,473	3,889,783
1994-95	307,785	261,052	250,527	301,645	285,323	571,094	191,386	332,321	285,310	3,829,327
1995-96	244,459	712,983	318,415	239,746	340,097	610,888	196,628	249,236	220,915	4,496,881
<b>MONTHLY</b>										
<b>1995 - 96 -</b>										
August	13,129	13,343	25,116	9,231	32,614	56,823	14,318	24,548	23,707	327,668
September	19,591	15,547	36,583	17,746	22,874	53,244	11,704	21,018	17,940	289,169
October	23,556	24,906	28,030	26,785	24,510	52,246	19,427	21,398	14,316	304,439
November	26,104	30,267	16,987	21,284	24,023	43,553	18,840	24,723	19,084	316,947
December	29,693	88,006	26,647	27,775	29,845	72,202	17,240	26,274	17,869	482,760
January	19,108	91,819	15,990	19,531	19,053	48,457	19,458	6,120	7,998	392,610
February	23,461	97,073	24,508	16,038	28,461	51,287	17,828	16,490	31,446	494,818
March	24,273	123,123	29,602	19,495	38,222	58,076	19,701	24,974	5,211	470,127
April	19,866	65,951	28,160	20,765	29,836	35,488	11,760	21,088	37,852	364,491
May	17,268	98,946	25,889	18,360	30,180	56,131	14,305	20,508	18,602	399,951
June	13,508	32,366	35,428	21,076	30,702	53,311	11,403	18,201	12,412	351,633
<b>1996 - 97 -</b>										
July	11,232	58,143	28,749	16,929	28,493	37,616	10,316	44,328	25,877	364,377
August	9,353	43,344	41,735	12,545	33,374	53,358	10,424	23,287	19,738	353,475
September	10,406	43,146	38,607	16,386	31,774	35,404	10,554	36,844	6,262	313,963
October	14,861	47,264	40,596	21,996	25,812	46,278	16,050	75,945	18,414	423,910

**MERCHANDISE EXPORTS BY SELECTED COUNTRIES**  
**Final stage of production in South Australia**  
**(\$'000)**

Period	United States	Middle East	European Community		New Zealand	East Asia				Total East Asia
			United Kingdom	Total Community		Japan	China	Hong Kong	ASEAN	
ANNUAL										
1988-89	184,903	397,324	108,635	355,669	230,263	390,207	51,975	55,474	240,507	869,226
1989-90	229,169	551,953	121,319	412,855	289,970	359,643	86,303	49,273	277,659	929,209
1990-91	321,032	325,450	186,353	480,714	179,193	438,970	146,434	80,640	403,754	1,284,576
1991-92	300,139	381,761	220,048	550,258	214,522	647,674	148,308	108,583	437,670	1,627,108
1992-93	352,764	314,049	237,520	594,701	288,421	649,684	208,135	171,803	487,174	1,820,065
1993-94	393,611	280,499	263,092	571,047	311,999	625,481	220,211	165,163	533,977	1,898,975
1994-95	329,878	184,342	246,118	553,051	376,279	682,936	177,875	193,014	551,433	2,004,012
1995-96	279,550	525,348	287,693	692,009	376,613	672,878	293,319	202,013	572,308	2,057,236
MONTHLY										
1995 - 96 -										
August	22,662	4,945	30,566	62,804	33,608	63,308	9,536	13,467	59,411	166,467
September	23,085	8,565	25,361	62,544	38,618	44,063	10,067	8,898	31,239	123,733
October	19,529	14,689	22,775	56,352	29,954	53,894	22,611	12,689	52,849	160,908
November	16,581	39,009	11,481	29,406	35,627	55,812	15,051	16,409	57,338	172,468
December	27,918	110,671	22,009	66,830	35,281	49,304	17,528	20,841	77,169	187,783
January	19,706	84,056	12,778	44,743	19,029	65,269	29,107	16,119	32,921	180,607
February	23,556	107,885	31,325	78,447	27,767	57,812	37,040	19,718	61,310	202,869
March	24,868	51,582	25,976	65,053	36,572	58,325	58,657	21,622	34,892	203,618
April	21,848	38,851	22,900	43,785	26,357	53,273	36,243	18,290	50,276	187,629
May	20,722	8,796	22,925	60,080	33,384	69,732	28,586	21,158	38,372	185,972
June	27,622	27,415	39,268	81,921	27,720	51,132	10,310	15,755	40,753	142,047
1996 - 97 -										
July	26,282	19,793	23,491	40,076	58,188	37,816	13,448	14,203	62,791	153,744
August	23,959	30,364	28,827	57,064	39,328	51,353	17,025	20,786	42,484	158,726
September	45,211	32,289	25,065	41,124	26,895	35,988	12,799	18,439	36,944	126,475
October	74,171	30,298	28,466	58,482	40,305	65,758	19,648	12,522	44,927	170,045

**MERCHANDISE EXPORTS BY INDUSTRY OF ORIGIN**  
**Final stage of production in South Australia**  
**(\$'000)**

Period	Agriculture, forestry and fishing	Mining	Food, beverages and tobacco	Manufacturing				Other industries/ confidential	Total
				Petroleum, coal, chemical associated product	Metal product	Machinery and equipment	Other manu- facturing		
ANNUAL									
1988-89	891,978	107,269	515,739	176,037	260,978	270,215	96,203	132,953	2,451,372
1989-90	979,463	133,318	583,544	133,078	406,144	320,349	99,984	172,210	2,828,091
1990-91	804,154	120,930	599,030	264,813	474,541	336,500	155,351	251,818	3,007,137
1991-92	882,011	248,846	702,148	201,681	541,522	381,737	178,485	294,709	3,431,139
1992-93	883,725	294,586	766,518	195,387	509,303	641,930	178,726	290,427	3,760,602
1993-94	733,014	245,247	884,737	180,147	475,060	665,066	208,573	497,938	3,889,783
1994-95	592,129	268,537	886,354	186,661	584,838	711,542	243,314	355,952	3,829,327
1995-96	1,014,114	226,307	977,766	172,267	639,259	674,001	226,482	566,684	4,496,881
MONTHLY									
1995 - 96 -									
August	28,192	32,057	72,851	10,061	57,339	63,519	19,856	43,793	327,668
September	34,304	11,819	86,704	16,508	54,378	50,068	18,498	16,890	289,169
October	52,612	10,747	85,726	12,266	53,132	53,413	16,776	19,767	304,439
November	57,292	27,650	67,517	9,630	44,699	53,265	20,745	36,148	316,947
December	118,496	8,265	98,243	20,013	79,849	63,869	21,986	72,039	482,760
January	119,118	27,927	77,337	8,181	49,325	35,778	17,538	57,407	392,610
February	122,372	24,558	84,919	16,652	53,893	50,810	16,447	125,167	494,818
March	155,779	12,291	90,333	14,433	59,129	70,618	21,525	46,018	470,127
April	94,200	28,555	74,805	16,616	38,555	57,023	18,305	36,433	364,491
May	104,726	23,538	84,700	18,645	59,239	59,331	17,911	31,862	399,951
June	61,544	11,058	77,847	11,623	58,736	55,917	18,726	56,182	351,633
1996 - 97 -									
July	90,273	27,283	64,549	17,236	37,653	80,442	18,415	28,526	364,377
August	58,247	21,111	87,283	16,117	54,535	64,979	19,539	31,665	353,475
September	63,201	2,055	81,469	13,729	36,969	76,719	19,052	20,769	313,963
October	70,596	23,542	85,222	15,952	51,506	110,802	19,714	46,578	423,910

**MERCHANDISE IMPORTS BY SELECTED COMMODITY GROUP**  
**Goods released from Customs control in South Australia**  
**(\$'000)**

Period	Food, beverages and tobacco	Petroleum and petroleum products	Chemicals	Textiles	Metals and metal manu- factures	Machinery	Road vehicles, parts and accessories	Other manu- factured goods	Total
ANNUAL									
1988-89	60,395	169,397	144,766	47,592	135,225	411,092	415,120	344,344	1,861,622
1989-90	71,796	203,654	167,154	49,249	147,969	462,885	414,800	399,437	2,050,024
1990-91	78,926	425,262	140,894	49,087	135,772	515,226	372,603	366,304	2,193,851
1991-92	82,095	362,777	153,574	62,884	151,165	523,848	435,121	513,012	2,396,954
1992-93	91,756	570,334	186,001	57,434	255,924	609,212	661,714	521,723	3,068,122
1993-94	99,177	404,626	200,225	60,172	160,937	595,238	663,617	484,590	2,803,446
1994-95	115,930	330,430	220,536	64,524	214,432	695,038	749,658	563,368	3,099,510
1995-96	118,237	346,397	254,102	76,847	213,487	675,869	546,445	728,096	3,114,309
MONTHLY									
1995 - 96 -									
August	9,606	23,010	28,671	7,480	24,255	67,838	57,785	67,301	299,381
September	10,407	21,085	12,320	7,156	18,140	45,362	39,826	42,134	203,934
October	10,865	21,481	14,044	6,525	18,154	50,105	62,159	61,470	257,264
November	11,322	22,223	18,176	8,716	18,048	61,466	37,229	56,644	243,063
December	11,964	44,318	14,105	4,193	11,216	43,339	48,448	78,622	272,071
January	10,464	23,714	22,404	5,208	16,968	71,580	40,787	52,901	252,230
February	8,386	43,261	20,499	5,920	18,823	49,981	35,606	61,576	254,005
March	8,874	64	35,531	5,560	19,237	54,101	42,833	49,765	242,808
April	9,155	42,010	30,060	5,999	16,184	53,368	47,497	60,585	275,216
May	10,336	32,580	19,662	5,993	17,306	67,725	35,970	63,905	266,206
June	7,669	21,616	15,891	6,713	18,888	52,873	45,012	85,729	261,521
1996 - 97 -									
July	10,309	31,507	13,838	7,478	17,070	66,901	42,448	62,929	265,219
August	14,251	54,974	16,394	6,946	24,177	70,218	55,143	49,988	307,604
September	10,374	23,728	12,268	7,797	18,448	69,154	39,198	101,403	290,193
October	15,527	50,251	15,748	6,584	18,722	72,084	48,343	47,170	284,756

**TURNOVER OF RETAIL ESTABLISHMENTS BY INDUSTRY**  
**South Australia**

<i>Period</i>	<i>Food retailing</i>	<i>Department stores</i>	<i>Clothing and soft good retailing</i>	<i>Household good retailing</i>	<i>Recreational good retailing</i>	<i>Other retailing</i>	<i>Hospitality and services</i>	<i>Total</i>
ANNUAL (\$ million)								
1986-87	2,240.3	893.8	396.8	601.0	229.7	332.3	862.0	5,555.9
1987-88	2,378.5	951.2	416.7	660.8	237.5	367.0	941.6	5,953.3
1988-89	2,534.9	971.8	462.2	726.6	268.5	420.7	1,019.1	6,403.8
1989-90	2,679.8	1,041.1	521.1	782.5	291.6	467.1	1,046.7	6,829.9
1990-91	2,978.2	1,069.0	543.9	778.8	303.9	497.7	1,111.2	7,282.7
1991-92	3,163.1	1,087.4	466.5	792.0	278.7	515.7	1,157.3	7,460.7
1992-93	3,018.5	1,101.5	434.2	783.3	311.2	617.4	1,132.7	7,398.8
1993-94	3,152.3	1,107.8	466.1	849.2	354.9	639.6	1,260.5	7,830.4
1994-95	3,360.7	1,128.7	524.0	881.1	359.0	737.8	1,562.3	8,553.6
1995-96	3,393.8	1,046.6	493.1	864.4	377.6	780.1	1,537.4	8,493.0
MONTHLY, ORIGINAL (\$ million)								
<b>1995 - 96 -</b>								
August	297.8	86.9	42.7	78.6	30.2	69.9	138.7	744.8
September	301.0	84.0	40.8	72.4	31.0	72.9	145.4	747.5
October	305.4	92.0	45.4	81.4	32.3	70.1	147.4	774.0
November	322.2	105.0	48.0	80.7	36.1	72.0	150.7	814.7
December	360.9	174.5	67.9	100.3	51.4	92.4	177.0	1,024.4
January	289.6	80.2	44.7	77.9	34.4	66.2	131.5	724.5
February	288.2	73.2	37.7	71.1	32.7	65.8	122.7	691.4
March	306.7	80.8	40.0	79.1	34.1	68.4	128.2	737.3
April	300.2	90.6	42.5	73.5	32.6	64.4	134.6	738.4
May	321.5	91.9	42.4	76.1	32.1	72.4	131.7	768.1
June	300.3	87.5	41.0	73.3	30.7	65.6	129.5	727.9
<b>1996 - 97 -</b>								
July	316.7	90.6	40.6	78.8	33.9	60.7	125.4	746.7
August	329.4	86.8	34.8	79.6	33.7	63.5	128.7	756.5
September	310.7	80.4	32.9	72.5	32.6	58.5	129.0	716.6
October	344.1	94.2	36.5	73.1	36.2	60.3	127.4	771.8
MONTHLY, TREND (\$ million)								
<b>1995 - 96 -</b>								
August	301.5	95.1	43.9	79.3	32.3	69.7	148.0	769.7
September	305.2	94.5	44.6	78.4	33.0	69.9	146.8	772.3
October	306.9	94.1	45.7	77.7	33.7	69.8	144.0	772.0
November	306.4	93.9	46.8	77.6	34.3	69.8	140.0	769.0
December	304.3	94.1	47.3	78.2	34.7	70.1	135.7	764.4
January	302.3	94.3	47.0	79.0	34.8	70.7	132.6	760.5
February	301.7	94.3	45.9	79.6	34.5	71.4	131.4	758.7
March	303.8	94.3	44.3	79.7	34.2	71.9	132.2	760.5
April	308.2	94.3	42.7	79.7	34.1	71.6	134.6	765.3
May	313.9	94.5	41.4	79.4	34.2	70.2	137.1	770.7
June	319.5	94.6	40.2	78.8	34.6	67.9	138.3	773.9
<b>1996 - 97 -</b>								
July	324.1	94.5	39.2	78.0	35.0	65.3	137.3	773.4
August	327.9	94.1	38.0	77.0	35.5	62.8	134.9	770.3
September	331.2	93.5	36.9	75.7	35.9	60.5	131.9	765.7
October	333.3	92.8	35.9	74.6	36.2	58.7	128.5	759.8
PERCENTAGE CHANGE FROM PREVIOUS MONTH, TREND								
<b>1995 - 96 -</b>								
September	1.2	-0.6	1.6	-1.1	2.2	0.3	-0.8	0.3
October	0.6	-0.4	2.5	-0.9	2.1	-0.1	-1.9	0.0
November	-0.2	-0.2	2.4	-0.1	1.8	0.0	-2.8	-0.4
December	-0.7	0.2	1.1	0.8	1.2	0.4	-3.1	-0.6
January	-0.7	0.2	-0.6	1.0	0.3	0.9	-2.3	-0.5
February	-0.2	0.0	-2.3	0.8	-0.9	1.0	-0.9	-0.2
March	0.7	0.0	-3.5	0.1	-0.9	0.7	0.6	0.2
April	1.4	0.0	-3.6	0.0	-0.3	-0.4	1.8	0.6
May	1.8	0.2	-3.0	-0.4	0.3	-2.0	1.9	0.7
June	1.8	0.1	-2.9	-0.8	1.2	-3.3	0.9	0.4
<b>1996 - 97 -</b>								
July	1.4	-0.1	-2.5	-1.0	1.2	-3.8	-0.7	-0.1
August	1.2	-0.4	-3.1	-1.3	1.4	-3.8	-1.7	-0.4
September	1.0	-0.6	-2.9	-1.7	1.1	-3.7	-2.2	-0.6
October	0.6	-0.7	-2.7	-1.5	0.8	-3.0	-2.6	-0.8

**NEW MOTOR VEHICLE REGISTRATIONS BY TYPE OF VEHICLE**  
**South Australia**

Period	Original			Seasonally adjusted			Trend estimate		
	Passenger Vehicles	Other vehicles	Total	Passenger Vehicles	Other vehicles	Total	Passenger Vehicles	Other vehicles	Total
<b>ANNUAL</b>									
1986-87	29,788	6,430	36,218	..	..	..	..	..	..
1987-88	29,915	5,775	35,690						
1988-89	31,920	6,816	38,736						
1989-90	35,211	7,808	43,019						
1990-91	34,753	6,619	41,372						
1991-92	32,351	5,333	37,684						
1992-93	32,894	5,577	38,471						
1993-94	32,806	5,781	38,587						
1994-95	35,830	6,736	42,566						
1995-96	33,521	6,382	39,903						
<b>PERCENTAGE CHANGE FROM PREVIOUS YEAR</b>									
1987-88	0.4	-10.2	-1.5	..	..	..	..	..	..
1988-89	6.7	18.0	8.5						
1989-90	10.3	14.6	11.1						
1990-91	-1.3	-15.2	-3.8						
1991-92	-6.9	-19.4	-8.9						
1992-93	1.7	4.6	2.1						
1993-94	-0.3	3.7	0.3						
1994-95	9.2	16.5	10.3						
1995-96	-6.4	-5.3	-6.3						
<b>MONTHLY</b>									
1995 - 96 -									
August	3,444	519	3,963	3,075	549	3,624	2,925	530	3,455
September	2,905	547	3,452	2,856	563	3,419	2,924	518	3,441
October	3,217	430	3,647	2,992	456	3,448	2,947	519	3,466
November	3,187	564	3,751	2,933	508	3,441	2,999	531	3,531
December	2,987	565	3,552	3,186	577	3,763	3,063	550	3,613
January	2,350	479	2,829	2,905	602	3,508	3,117	572	3,688
February	3,244	588	3,832	3,259	621	3,880	3,147	593	3,740
March	3,271	596	3,867	3,243	534	3,778	3,145	614	3,759
April	2,745	541	3,286	3,135	629	3,765	3,108	627	3,735
May	3,080	712	3,792	2,951	653	3,604	3,043	629	3,672
June	3,091	841	3,932	3,040	696	3,737	2,962	622	3,585
1996 - 97 -									
July	2,862	595	3,457	2,700	561	3,262	2,877	608	3,484
August	3,024	545	3,569	2,878	594	3,472	2,797	588	3,385
September	2,939	498	3,437	2,908	529	3,437	2,724	568	3,292
October	2,817	543	3,360	2,449	556	3,004	2,661	546	3,206
<b>PERCENTAGE CHANGE FROM PREVIOUS MONTH</b>									
1995 - 96 -									
September	-15.7	5.4	-12.9	-7.1	2.6	-5.7	0.0	-2.3	-0.4
October	10.7	-21.4	5.6	4.8	-19.0	0.8	0.8	0.2	0.7
November	-0.9	31.2	2.9	-2.0	11.4	-0.2	1.8	2.3	1.9
December	-6.3	0.2	-5.3	8.6	13.6	9.4	2.1	3.6	2.3
January	-21.3	-15.2	-20.4	-8.8	4.3	-6.8	1.8	4.0	2.1
February	38.0	22.8	35.5	12.2	3.2	10.6	1.0	3.7	1.4
March	0.8	1.4	0.9	-0.5	-14.0	-2.6	-0.1	3.5	0.5
April	-16.1	-9.2	-15.0	-3.3	17.8	-0.3	-1.2	2.1	-0.6
May	12.2	31.6	15.4	-5.9	3.8	-4.3	-2.1	0.3	-1.7
June	0.4	18.1	3.7	3.0	6.6	3.7	-2.7	-1.1	-2.4
1996 - 97 -									
July	-7.4	-29.3	-12.1	-11.2	-19.4	-12.7	-2.9	-2.3	-2.8
August	5.7	-8.4	3.2	6.6	5.9	6.4	-2.8	-3.3	-2.8
September	-2.8	-8.6	-3.7	1.0	-10.9	-1.0	-2.6	-3.4	-2.7
October	-4.2	9.0	-2.2	-15.8	5.1	-12.6	-2.3	-3.9	-2.6

**ACTUAL PRIVATE NEW CAPITAL EXPENDITURE BY SELECTED INDUSTRY AND TYPE OF ASSET**  
**South Australia**

Period	Industry			Total	Type of asset	
	Mining	Manufacturing	Other selected industries		New buildings and structures	Equipment, plant and machinery
ANNUAL (\$ million)						
1990-91	122	742	988	1,852	628	1,224
1991-92	193	763	668	1,625	392	1,233
1992-93	218	564	739	1,522	416	1,105
1993-94	97	613	773	1,484	356	1,128
1994-95	115	829	1,162	2,106	351	1,755
1995-96	192	730	861	1,783	337	1,477
PERCENTAGE CHANGE FROM PREVIOUS YEAR						
1991-92	58.4	2.9	-32.3	-12.2	-37.5	0.8
1992-93	12.8	-26.1	10.6	-6.4	6.1	-10.4
1993-94	-55.5	8.7	4.6	-2.5	-14.5	2.0
1994-95	18.3	35.2	50.3	41.9	-1.4	55.6
1995-96	67.0	-11.9	-25.9	-15.3	-4.0	-15.8
QUARTERLY, ORIGINAL (\$ million)						
1993 - 94 - June	22	207	169	399	62	336
1994 - 95 - September	14	129	338	481	151	330
December	40	226	419	684	77	607
March	22	202	222	446	65	382
June	38	272	183	494	58	436
1995 - 96 - September	34	158	168	360	70	290
December	47	207	280	536	87	449
March	48	162	165	375	72	304
June	62	203	248	513	108	405
PERCENTAGE CHANGE FROM PREVIOUS QUARTER, ORIGINAL						
1994 - 95 - September	-35.4	-37.9	99.9	20.8	141.7	-1.7
December	175.0	75.6	23.8	42.2	-48.7	83.7
March	-45.7	-10.5	-46.9	-34.8	-16.4	-37.1
June	76.7	34.4	-17.7	10.8	-9.6	14.3
1995 - 96 - September	-9.7	-42.0	-8.4	-27.3	19.7	-33.5
December	38.2	31.5	67.4	49.2	24.7	55.0
March	0.8	-21.8	-41.0	-30.1	-17.9	-32.4
June	29.3	25.1	50.0	36.8	51.1	33.2
QUARTERLY, TREND (\$ million)						
1993 - 94 - June	n.a.	n.a.	n.a.	427	107	320
1994 - 95 - September				513	105	407
December				556	89	468
March				523	71	452
June				462	65	397
1995 - 96 - September				429	69	360
December				438	76	363
March				455	92	363
June				476	113	363
PERCENTAGE CHANGE FROM PREVIOUS QUARTER, TREND						
1994 - 95 - September	..	..	..	20.1	-1.9	27.2
December				8.4	-15.2	15.0
March				-5.9	-20.2	-3.4
June				-11.7	-8.5	-12.2
1995 - 96 - September				-7.1	6.2	-9.3
December				2.1	10.1	0.8
March				3.9	21.1	0.0
June				4.6	22.8	0.0

**TOURIST ACCOMMODATION**  
**South Australia**

Period	Hotels, motels, guesthouses with facilities			Holiday flats, units and houses			Short-term caravan parks		
	Number of guest rooms	Room occupancy (per cent)	Takings (\$'000)	Number of flats, units and houses	Unit occupancy (per cent)	Takings (\$'000)	Number of sites	Site occupancy (per cent)	Takings (\$'000)
<b>ANNUAL</b>									
1986-87	8,497	52.9	79,254	n.a.	n.a.	n.a.	18,773	18.1	12,647
1987-88	9,156	50.8	89,321	1,105	45.4	8,109	18,926	17.8	13,248
1988-89	9,396	50.5	102,737	1,171	45.8	9,792	19,195	17.4	14,711
1989-90	10,316	52.0	121,788	1,113	48.4	11,381	19,847	18.4	17,174
1990-91	10,445	48.0	128,634	1,210	43.9	10,339	19,794	17.7	18,102
1991-92	10,745	46.6	130,578	1,302	40.4	10,492	20,601	17.1	19,111
1992-93	10,632	46.5	129,882	1,338	40.2	10,740	20,038	22.3	20,113
1993-94	10,597	48.6	138,782	1,338	40.9	11,700	19,591	23.7	20,790
1994-95	10,594	51.3	149,698	1,342	40.0	11,644	20,175	24.5	22,537
1995-96	10,772	52.4	161,136	1,356	41.5	12,844	20,187	24.9	23,578
<b>PERCENTAGE CHANGE FROM PREVIOUS YEAR</b>									
1987-88	7.8	..	12.7	n.a.	..	n.a.	0.8	..	4.8
1988-89	2.6	..	15.0	6.0	..	20.8	1.4	..	11.0
1989-90	9.8	..	18.5	-5.0	..	16.2	3.4	..	16.7
1990-91	1.3	..	5.6	8.7	..	-9.2	-0.3	..	5.4
1991-92	2.9	..	1.5	7.6	..	1.5	4.1	..	5.6
1992-93	-1.1	..	-0.5	2.8	..	2.4	-2.7	..	5.2
1993-94	-0.3	..	6.9	0.0	..	8.9	-2.2	..	3.4
1994-95	0.0	..	7.9	0.3	..	-0.5	3.0	..	8.4
1995-96	1.7	..	7.6	1.0	..	10.3	0.1	..	4.6
<b>QUARTERLY</b>									
1993 - 94 - June	10,597	47.4	32,547	1,338	36.1	2,313	19,591	24.3	4,893
1994 - 95 - September	10,560	48.7	34,734	1,326	34.0	2,418	19,988	20.9	4,211
December	10,608	53.0	41,265	1,360	40.0	3,000	20,126	24.5	5,581
March	10,603	53.4	37,897	1,337	50.1	3,776	20,132	28.4	7,047
June	10,605	50.0	35,802	1,346	35.9	2,451	20,452	24.3	5,597
1995 - 96 - September	10,703	50.3	37,077	1,289	32.4	2,273	20,350	22.3	4,809
December	10,763	52.9	42,999	1,297	40.3	3,120	20,123	24.5	6,103
March	10,757	55.1	41,938	1,388	54.9	4,512	20,154	27.8	6,931
June	10,865	51.4	39,121	1,451	38.0	2,940	20,122	25.0	5,736
1996 - 97 - September	10,879	48.9	37,567	1,426	35.1	2,885	20,247	21.0	4,735
<b>PERCENTAGE CHANGE FROM PREVIOUS QUARTER</b>									
1994 - 95 - September	-0.3	..	6.7	-0.9	..	4.5	2.0	..	-13.9
December	0.5	..	18.8	2.6	..	24.1	0.7	..	34.9
March	0.0	..	-8.2	-1.7	..	25.9	0.0	..	24.0
June	0.0	..	-5.5	0.7	..	-35.1	1.6	..	-20.6
1995 - 96 - September	0.9	..	0.9	-4.2	..	-7.3	-0.5	..	-14.1
December	0.6	..	16.0	0.6	..	37.3	-1.1	..	26.9
March	-0.1	..	-2.5	7.0	..	44.6	0.2	..	13.6
June	1.0	..	-6.7	4.5	..	-34.8	-0.2	..	-17.2
1996 - 97 - September	0.1	..	-4.0	-1.7	..	-1.9	0.6	..	-17.5

# **BUILDING APPROVALS** **South Australia**

Period	Number of dwelling units				Value (\$ million)			
	Houses		Total(a)		New residential building	Alterations and additions to residential building	Non-residential building	Total building
	Private sector	Total	Private sector	Total				
ANNUAL								
1987-88	6,276	6,900	7,383	9,009	497	94	749	1,340
1988-89	7,526	8,006	9,642	11,238	690	109	895	1,694
1989-90	7,246	7,675	10,180	11,701	733	110	914	1,757
1990-91	8,351	8,633	10,418	11,426	755	119	591	1,465
1991-92	8,613	8,931	10,254	11,290	756	124	627	1,506
1992-93	9,710	10,087	11,548	12,341	841	133	418	1,392
1993-94	9,470	9,901	11,046	11,777	839	122	375	1,336
1994-95	7,757	8,147	9,208	9,762	740	120	493	1,353
1995-96	4,930	5,109	5,760	5,968	469	119	566	1,155
PERCENTAGE CHANGE FROM PREVIOUS YEAR								
1988-89	19.9	16.0	30.6	24.7	38.8	16.0	19.5	26.4
1989-90	-3.7	-4.1	5.6	4.1	6.1	1.2	2.1	3.7
1990-91	15.2	12.5	2.3	-2.4	3.1	8.6	-35.4	-16.6
1991-92	3.1	3.5	-1.6	-1.2	0.1	3.9	6.1	2.8
1992-93	12.7	12.9	12.6	9.3	11.3	7.1	-33.2	-7.6
1993-94	-2.5	-1.8	-4.3	-4.6	-0.2	-8.0	-10.4	-4.0
1994-95	-18.1	-17.7	-16.6	-17.1	-11.8	-1.7	31.5	1.3
1995-96	-36.4	-37.3	-37.4	-38.9	-36.5	-0.7	14.8	-14.7
MONTHLY, ORIGINAL								
1995 - 96 -								
August	564	608	623	671	52.3	11.2	31.5	94.9
September	437	467	547	592	45.0	12.1	31.1	88.2
October	415	422	512	519	39.2	10.4	69.2	118.8
November	388	390	525	527	40.8	10.3	33.1	84.2
December	354	367	421	434	34.5	8.9	36.1	79.5
January	299	306	346	355	29.2	8.5	64.4	102.1
February	393	418	461	486	39.6	8.4	16.5	64.5
March	388	393	432	437	36.5	11.4	49.9	97.8
April	380	386	424	430	31.9	8.5	27.5	67.9
May	464	483	486	505	40.8	10.0	143.6	194.3
June	403	406	433	436	34.3	10.5	26.9	71.8
1996 - 97 -								
July	476	481	523	528	42.8	7.7	41.9	92.5
August	484	492	536	547	45.2	10.3	60.9	116.4
September	458	462	510	514	43.4	10.7	59.1	113.2
October	401	414	553	566	43.7	12.0	28.5	84.2
MONTHLY, TREND								
1995 - 96 -								
August	433	461	528	560	n.a.	n.a.	n.a.	n.a.
September	424	452	522	555				
October	413	438	510	540				
November	400	422	488	516				
December	393	412	469	493				
January	392	408	454	476				
February	395	408	446	462				
March	403	411	444	454				
April	410	413	447	449				
May	415	415	451	449				
June	418	418	458	456				
1996 - 97 -								
July	419	422	468	470				
August	418	425	482	488				
September	416	429	497	509				
October	414	430	511	529				
PERCENTAGE CHANGE FROM PREVIOUS MONTH, TREND								
1995 - 96 -								
September	-2.1	-2.0	-1.1	-0.9	..	..	..	..
October	-2.6	-3.1	-2.3	-2.7				
November	-3.1	-3.7	-4.3	-4.4				
December	-1.8	-2.4	-3.9	-4.5				
January	-0.3	-1.0	-3.2	-3.4				
February	0.8	0.0	-1.8	-2.9				
March	2.0	0.7	-0.4	-1.7				
April	1.7	0.5	0.7	-1.1				
May	1.2	0.5	0.9	0.0				
June	0.7	0.7	1.6	1.6				
1996 - 97 -								
July	0.2	1.0	2.2	3.1				
August	-0.2	0.7	3.0	3.8				
September	-0.5	0.9	3.1	4.3				
October	-0.5	0.2	2.8	3.9				

(a) Includes the number of self-contained dwelling units approved as part of the construction of non-residential building and alterations to existing buildings (including conversions to dwelling units).



### BUILDING COMMENCEMENTS South Australia

Period	Number of new dwelling units				Value (\$ million)				
	Houses		Total (a)		New residential building	Alterations and additions to residential building	Non-residential building		Total building
	Private sector	Total	Private sector	Total			Private sector	Total	
ANNUAL									
1984-85	8,502	9,641	11,782	14,294	660.3	66.0	345.6	509.7	1,236.0
1985-86	6,334	7,267	8,840	10,779	558.5	80.9	430.7	602.4	1,241.7
1986-87	5,345	6,458	6,552	8,987	475.7	75.3	430.1	674.4	1,225.4
1987-88	5,664	6,388	6,723	8,511	472.9	92.2	527.2	718.8	1,283.8
1988-89	7,132	7,580	8,853	10,304	646.2	103.7	760.3	964.1	1,709.9
1989-90	6,734	7,174	9,421	10,989	718.2	111.6	669.6	934.2	1,763.9
1990-91	7,863	8,177	9,683	10,837	727.5	118.2	367.1	554.0	1,399.6
1991-92	8,036	8,344	9,635	10,700	727.2	125.1	344.5	607.8	1,460.1
1992-93	9,122	9,416	10,889	11,647	816.2	122.4	205.5	458.7	1,397.2
1993-94	9,159	9,590	10,707	11,501	845.3	126.5	209.9	373.0	1,344.8
1994-95	7,745	8,210	9,115	9,794	765.5	125.3	251.7	518.5	1,409.3
1995-96	4,838	5,072	5,693	5,962	496.6	122.1	419.4	598.4	1,217.1
QUARTERLY									
1993 - 94 -									
March	1,977	2,023	2,412	2,556	188.1	29.8	51.1	97.6	315.4
June	2,235	2,396	2,629	2,883	213.4	30.2	55.2	93.5	337.1
1994 - 95 -									
September	2,413	2,526	2,857	3,085	235.6	34.3	57.0	101.8	371.7
December	2,303	2,435	2,691	2,873	221.1	31.8	52.8	99.5	352.4
March	1,631	1,735	1,942	2,073	167.9	26.4	55.6	92.1	286.4
June	1,396	1,512	1,625	1,763	140.9	32.8	86.3	225.1	398.8
1995 - 96 -									
September	1,398	1,504	1,651	1,771	142.4	29.4	69.5	108.4	280.3
December	1,242	1,295	1,519	1,587	133.9	34.0	85.5	119.5	287.4
March	1,044	1,089	1,248	1,295	109.2	29.4	80.1	139.9	278.4
June	1,154	1,184	1,275	1,309	111.1	29.2	184.2	230.6	370.9
1996 - 97 -									
September	1,185	1,201	1,296	1,315	n.y.a.	n.y.a.	n.y.a.	n.y.a.	n.y.a.

(a) Includes conversions.

### VALUE OF BUILDING WORK DONE DURING PERIOD South Australia

Period	New residential building				Alterations and additions to residential buildings	Non-residential building		Total building	
	Houses		Total			Private sector	Total	Private sector	Total
	Private sector	Total	Private sector	Total					
ANNUAL (\$ million)									
1984-85	414.4	456.3	542.3	626.7	65.6	285.1	433.4	891.6	1,125.7
1985-86	369.2	411.5	497.9	585.1	78.7	413.6	589.7	988.5	1,253.4
1986-87	310.0	364.8	385.4	492.2	78.4	447.9	645.2	908.1	1,215.8
1987-88	343.8	381.1	391.4	467.7	88.2	551.8	811.2	1,027.0	1,367.1
1988-89	450.2	469.2	538.8	597.0	104.1	657.5	902.2	1,297.3	1,603.3
1989-90	493.8	518.9	657.4	724.9	116.3	743.2	988.6	1,514.0	1,829.8
1990-91	578.3	600.2	713.6	782.3	122.0	621.9	876.6	1,455.4	1,780.8
1991-92	591.5	607.5	693.4	748.5	125.1	310.3	484.1	1,127.5	1,357.6
1992-93	647.2	660.9	743.8	780.6	127.1	297.9	570.9	1,166.3	1,478.6
1993-94	719.1	746.4	828.9	876.3	132.0	217.7	462.1	1,177.2	1,470.4
1994-95	659.6	693.6	766.1	816.4	129.4	271.6	476.9	1,164.3	1,422.7
1995-96	441.6	460.7	513.0	534.9	130.5	295.0	525.8	936.9	1,191.2
QUARTERLY (\$ million)									
1993 - 94 -									
March	167.4	172.2	192.3	202.3	32.4	50.2	96.8	274.3	331.5
June	175.7	182.9	204.2	215.3	30.8	53.1	111.0	287.5	357.2
1994 - 95 -									
September	185.6	193.5	215.3	230.8	37.4	63.7	113.5	316.1	381.8
December	185.3	195.7	216.0	231.4	35.6	63.0	117.8	313.1	384.7
March	153.3	159.5	179.5	187.9	25.1	57.2	104.4	261.4	317.4
June	135.3	144.8	155.3	166.3	31.2	87.8	141.3	273.7	338.8
1995 - 96 -									
September	117.9	124.5	138.8	146.6	31.4	72.7	121.7	241.7	299.6
December	119.2	125.6	137.7	144.8	39.9	87.1	142.9	264.7	327.6
March	101.6	105.4	118.8	123.1	26.7	63.4	122.0	208.6	271.8
June	102.8	105.3	117.7	120.4	32.6	71.8	139.2	222.0	292.2

**PRODUCTION, SELECTED COMMODITIES**  
**South Australia**

<i>Period</i>	<i>Footwear (pairs)</i>	<i>Gas (m megajoules)</i>	<i>Electricity (including NT) ('000 kWh)</i>	<i>Coal (tonnes)</i>	<i>Sawn timber(a) (m<sup>3</sup>)</i>
<b>ANNUAL</b>					
1986-87	2,147,468	82,550	9,666,694	2,435,010	194,458
1987-88	1,982,301	83,101	10,137,144	2,566,347	254,453
1988-89	2,062,085	86,546	10,588,647	2,674,215	292,335
1989-90	1,749,112	85,070	10,665,118	2,921,861	228,156
1990-91	1,837,602	73,265	8,878,357	2,441,040	240,193
1991-92	1,852,890	78,210	10,025,649	2,819,880	271,603
1992-93	1,406,178	83,000	10,226,734	2,753,610	317,096
1993-94	1,382,949	89,382	10,560,251	2,643,000	364,961
1994-95	1,430,417	86,123	10,051,056	2,554,560	392,349
1995-96	n.a.	76,074	8,733,503	2,409,120	413,545
<b>PERCENTAGE CHANGE FROM PREVIOUS YEAR</b>					
1987-88	-7.7	0.7	4.9	5.4	30.9
1988-89	4.0	4.1	4.5	4.2	14.9
1989-90	-15.2	-1.7	0.7	9.3	-22.0
1990-91	5.1	-13.9	-16.8	-16.5	5.3
1991-92	0.8	6.7	12.9	15.5	13.1
1992-93	-24.1	6.1	2.0	-2.4	16.7
1993-94	-1.7	7.7	3.3	-4.0	15.1
1994-95	3.4	-3.6	-4.8	-3.3	7.5
1995-96	n.a.	-11.7	-13.1	-5.7	5.4
<b>MONTHLY/QUARTERLY (b), ORIGINAL</b>					
<b>1995 - 96 -</b>					
August	123,733	7,667	791,871	214,680	..
September	134,797	6,201	685,549	214,200	121,851
October	95,340	6,922	671,726	119,400	..
November	108,312	6,252	665,680	141,660	..
December	89,857	5,126	673,409	208,920	112,148
January	80,341	4,990	713,816	232,020	..
February	124,734	5,548	742,084	233,280	..
March	151,541	6,163	765,278	254,940	88,684
April	101,261	6,088	632,648	159,960	..
May	n.a.	5,728	725,035	186,600	..
June	n.a.	7,047	788,337	216,120	90,862
<b>1996 - 97 -</b>					
July	n.a.	7,478	805,153	242,820	..
August	n.a.	7,077	780,265	231,720	..
September	n.a.	6,545	715,089	203,820	n.y.a.
October	n.a.	6,788	701,744	150,480	..
<b>PERCENTAGE CHANGE FROM PREVIOUS MONTH/QUARTER (b)</b>					
<b>1995 - 96 -</b>					
September	8.9	-19.1	-13.4	-0.2	16.3
October	-29.3	11.6	-2.0	-44.3	..
November	13.6	-9.7	-0.9	18.6	..
December	-17.0	-18.0	1.2	47.5	-8.0
January	-10.6	-2.7	6.0	11.1	..
February	55.3	11.2	4.0	0.5	..
March	21.5	11.1	3.1	9.3	-20.9
April	-33.2	-1.2	-17.3	-37.3	..
May	n.a.	-5.9	14.6	16.7	..
June	n.a.	23.0	8.7	15.8	2.5
<b>1996 - 97 -</b>					
July	n.a.	6.1	2.1	12.4	..
August	n.a.	-5.4	-3.1	-4.6	..
September	n.a.	-7.5	-8.4	-12.0	n.y.a.
October	n.a.	3.7	-1.9	-26.2	..

(a) From Australian softwood logs only.

(b) Sawn timber production data available quarterly only.

**PRODUCTION, LIVESTOCK PRODUCTS AND SELECTED COMMODITIES**  
**South Australia**

<i>Period</i>	<i>Chicken</i>	<i>Pigmeat</i>	<i>Beef</i>	<i>Mutton</i>	<i>Lamb</i>	<i>Cheese</i>	<i>Wheat flour, other than self-raising</i>
<b>ANNUAL (tonnes)</b>							
1984-85	35,882	36,508	79,111	35,800	30,136	23,273	74,643
1985-86	34,235	37,432	77,898	41,507	31,485	25,086	73,926
1986-87	33,776	40,761	90,283	43,934	32,416	27,438	80,310
1987-88	34,907	36,671	91,701	45,562	34,335	25,497	91,325
1988-89	32,946	40,364	87,160	42,159	36,203	24,704	96,418
1989-90	35,248	40,815	99,699	50,939	38,052	22,774	88,503
1990-91	31,945	38,644	87,036	65,434	32,038	24,522	83,727
1991-92	36,978	34,538	90,661	72,578	29,941	23,494	81,065
1992-93	38,619	38,153	96,338	65,689	39,334	26,140	87,761
1993-94	40,671	38,394	94,395	71,354	45,199	26,674	84,683
1994-95	39,103	32,063	99,108	66,759	36,147	29,154	80,666
1995-96	37,691	26,711	90,958	52,714	37,829	29,316	91,321
<b>PERCENTAGE CHANGE FROM PREVIOUS YEAR</b>							
1985-86	-4.6	2.5	-1.5	15.9	4.5	7.8	-1.0
1986-87	-1.3	8.9	15.9	5.8	3.0	9.4	8.6
1987-88	3.3	-10.0	1.6	3.7	5.9	-7.1	13.7
1988-89	-5.6	10.1	-5.0	-7.5	5.4	-3.1	5.6
1989-90	7.0	1.1	14.4	20.8	5.1	-7.8	-8.2
1990-91	-9.4	-5.3	-12.7	28.5	-15.8	7.7	-5.4
1991-92	15.8	-10.6	4.2	10.9	-6.5	-4.2	-3.2
1992-93	4.4	10.5	6.3	-9.5	31.4	11.3	8.3
1993-94	5.3	0.6	-2.0	8.6	14.9	2.0	-3.5
1994-95	-3.9	-16.5	5.0	-6.4	-20.0	9.3	-4.7
1995-96	-3.6	-16.7	-8.2	-21.0	4.7	0.6	13.2
<b>MONTHLY (tonnes)</b>							
<b>1995 - 96 -</b>							
August	2,656	2,614	6,588	3,061	3,204	2,772	7,575
September	3,111	2,240	8,850	4,525	4,212	2,805	7,479
October	2,961	2,125	9,382	5,002	4,455	3,280	6,878
November	3,182	2,608	9,908	7,065	4,008	2,706	8,187
December	3,419	1,907	7,036	3,906	2,691	2,912	8,952
January	3,286	2,092	9,208	5,711	2,693	2,419	6,566
February	2,991	2,297	9,065	6,320	3,213	4,806	8,503
March	3,361	1,899	8,091	5,468	3,385	1,357	8,283
April	3,438	1,985	6,352	3,523	2,965	2,122	7,665
May	2,880	2,646	7,037	3,286	3,282	2,174	14,422
June	2,942	2,136	5,913	2,880	1,921	1,963	6,811
<b>1996 - 97 -</b>							
July	3,110	2,561	5,342	2,424	1,904	2,120	7,099
August	2,832	2,454	5,292	2,504	1,863	3,191	7,468
September	3,048	1,896	6,752	3,487	2,784	5,163	7,089
October	3,164	1,775	8,232	4,742	3,429	n.y.a.	6,866
<b>PERCENTAGE CHANGE FROM PREVIOUS MONTH</b>							
<b>1995 - 96 -</b>							
September	17.1	-14.3	34.3	47.9	31.5	1.2	-1.3
October	-4.8	-5.1	6.0	10.5	5.8	32.8	-8.0
November	7.5	22.8	5.6	41.2	-10.0	-17.5	19.0
December	7.4	-26.9	-29.0	-44.7	-32.9	7.6	9.3
January	-3.9	9.7	30.9	46.2	0.1	-16.9	-26.7
February	-9.0	9.8	-1.6	10.7	19.3	98.7	29.5
March	12.3	-17.3	-10.7	-13.5	5.3	-71.8	-2.6
April	2.3	4.5	-21.5	-35.6	-12.4	56.4	-7.5
May	-16.2	33.3	10.8	-6.7	10.7	2.5	88.2
June	2.2	-19.3	-16.0	-12.4	-41.5	-9.7	-52.8
<b>1996 - 97 -</b>							
July	5.7	19.9	-9.7	-15.8	-0.9	8.0	4.2
August	-8.9	-4.2	-0.9	3.3	-2.2	50.5	5.2
September	7.6	-22.7	27.6	39.3	49.4	61.8	-5.1
October	3.8	-6.4	21.9	36.0	23.2	n.y.a.	-3.1

**CONSUMER PRICE INDEX: BY GROUP**  
**Adelaide**

<i>Period</i>	<i>Food</i>	<i>Clothing</i>	<i>Housing</i>	<i>Household equipment and operation</i>	<i>Transport- ation</i>	<i>Tobacco and alcohol</i>	<i>Health and personal care</i>	<i>Recreation and education</i>	<i>All groups</i>
ANNUAL AVERAGE (1989-90 = 100)									
1985-86	77.0	74.0	73.4	78.9	74.8	72.7	63.2	74.9	74.7
1986-87	83.2	81.8	76.9	84.3	83.0	79.4	75.6	82.1	81.5
1987-88	87.6	88.2	79.5	89.9	88.6	85.7	84.0	89.6	87.0
1988-89	95.2	95.3	87.0	95.1	94.2	92.5	90.8	94.6	93.3
1989-90	100.0	100.0	100.0	100.0	100.0	100.0	100.0	100.0	100.0
1990-91	103.8	103.6	104.1	105.4	107.0	112.0	113.4	104.8	106.2
1991-92	106.0	105.3	100.4	107.5	110.5	118.6	127.8	107.7	108.9
1992-93	109.3	107.0	94.3	107.6	115.0	131.2	134.9	110.7	111.2
1993-94	111.7	106.6	92.1	108.0	117.8	141.5	142.7	113.7	113.4
1994-95	115.1	104.9	97.8	109.2	120.2	148.9	151.3	116.3	116.9
1995-96	118.2	105.1	103.6	112.1	124.5	160.1	158.9	118.0	121.2
PERCENTAGE CHANGE FROM PREVIOUS YEAR, ANNUAL AVERAGE									
1986-87	8.1	10.5	4.8	6.8	11.0	9.2	19.6	9.6	9.1
1987-88	5.3	7.8	3.4	6.6	6.7	7.9	11.1	9.1	6.7
1988-89	8.7	8.0	9.4	5.8	6.3	7.9	8.1	5.6	7.2
1989-90	5.0	4.9	14.9	5.2	6.2	8.1	10.1	5.7	7.2
1990-91	3.8	3.6	4.1	5.4	7.0	12.0	13.4	4.8	6.2
1991-92	2.1	1.6	-3.6	2.0	3.3	5.9	12.7	2.8	2.5
1992-93	3.1	1.6	-6.1	0.1	4.1	10.6	5.6	2.8	2.1
1993-94	2.2	-0.4	-2.3	0.4	2.4	7.9	5.8	2.7	2.0
1994-95	3.0	-1.6	6.2	1.1	2.0	5.2	6.0	2.2	3.1
1995-96	2.7	0.2	5.9	2.7	3.6	7.6	5.0	1.5	3.7
QUARTERLY (1989-90=100.0)									
1993 - 94 -									
June	113.0	105.8	91.9	108.2	118.5	144.5	148.2	114.8	114.4
1994 - 95 -									
September	114.5	105.2	92.4	108.3	119.6	144.2	148.3	115.1	114.9
December	114.3	105.1	95.6	108.7	119.8	147.8	148.7	116.2	116.0
March	115.7	104.2	100.8	109.5	119.9	150.2	153.0	117.2	117.8
June	115.7	105.1	102.2	110.2	121.4	153.2	155.3	116.5	118.8
1995 - 96 -									
September	117.8	104.8	102.7	111.5	124.4	154.8	155.4	116.5	120.1
December	118.2	105.2	103.8	112.0	124.3	159.7	158.7	117.3	121.1
March	118.2	104.9	103.9	112.4	123.9	162.2	161.0	118.9	121.6
June	118.4	105.5	103.9	112.3	125.3	163.6	160.6	119.2	122.0
1996 - 97 -									
September	119.2	105.5	103.5	113.0	124.4	164.7	160.9	119.2	122.2
PERCENTAGE CHANGE FROM SAME QUARTER OF PREVIOUS YEAR									
1993 - 94 -									
June	2.4	-1.7	-2.0	0.8	2.1	5.9	6.7	2.2	1.9
1994 - 95 -									
September	3.7	-2.1	-1.0	0.7	2.0	3.9	6.9	2.0	2.0
December	2.7	-1.9	4.4	0.5	1.9	5.6	7.4	2.8	2.8
March	3.3	-1.7	10.0	1.5	2.0	5.3	5.2	2.7	3.7
June	2.4	-0.7	11.2	1.8	2.4	6.0	4.8	1.5	3.8
1995 - 96 -									
September	2.9	-0.4	11.1	3.0	4.0	7.4	4.8	1.2	4.5
December	3.4	0.1	8.6	3.0	3.8	8.1	6.7	0.9	4.4
March	2.2	0.7	3.1	2.6	3.3	8.0	5.2	1.5	3.2
June	2.3	0.4	1.7	1.9	3.2	6.8	3.4	2.3	2.7
1996-97									
September	1.2	0.7	0.8	1.3	0.0	6.4	3.5	2.3	1.7
PERCENTAGE CHANGE FROM PREVIOUS QUARTER									
1994 - 95 -									
September	1.3	-0.6	0.5	0.1	0.9	-0.2	0.1	0.3	0.4
December	-0.2	-0.1	3.5	0.4	0.2	2.5	0.3	1.0	1.0
March	1.2	-0.9	5.4	0.7	0.1	1.6	2.9	0.9	1.6
June	0.0	0.9	1.4	0.6	1.3	2.0	1.5	-0.6	0.8
1995 - 96 -									
September	1.8	-0.3	0.5	1.2	2.5	1.0	0.1	0.0	1.1
December	0.3	0.4	1.1	0.4	-0.1	3.2	2.1	0.7	0.8
March	0.0	-0.3	0.1	0.4	-0.3	1.6	1.4	1.4	0.4
June	0.2	0.6	0.0	-0.1	1.1	0.9	-0.2	0.3	0.3
1996-97									
September	0.7	0.0	-0.4	0.6	-0.7	0.7	0.2	0.0	0.2

**AVERAGE RETAIL PRICES OF SELECTED CONSUMER ITEMS**  
**Adelaide (cents)**

Item	Unit	Quarter				
		Sept. 1995	Dec. 1995	Mar. 1996	June 1996	Sept. 1996
Milk, carton, supermarket sales	1 litre	114	114	114	113	114
Cheese, processed, sliced, wrapped	500g	327	335	334	337	322
Butter	500g	163	165	165	167	160
Bread, white loaf, sliced, supermarket sales	680g	148	148	152	141	154
Self-raising flour	2kg	204	213	228	238	243
Beef: Rump steak	1kg	1,177	1,130	1,122	1,168	1,123
Corned silverside	1kg	639	642	637	645	624
Lamb: Leg	1kg	561	516	608	584	586
Loin chops	1kg	745	726	799	812	808
Forequarter chops	1kg	545	514	566	544	555
Pork: Leg	1kg	598	593	598	608	621
Loin chops	1kg	747	764	764	765	778
Chicken, frozen	1kg	330	331	350	348	369
Bacon, middle rashers	250g pkt	296	287	303	289	292
Sausages	1kg	374	366	356	358	351
Potatoes	1kg	106	134	72	70	67
Onions	1kg	181	192	108	74	83
Peaches, canned	825g	190	185	186	189	174
Eggs, 55g	doz	210	230	232	240	239
Sugar, white	2kg	174	186	189	180	182
Tea	250g	162	166	175	159	168
Coffee, instant, jar	150g	563	552	552	528	509
Margarine, polyunsaturated	500g	140	148	141	141	139
Petrol: Leaded	1 litre	75.3	74.0	73.6	75.9	73.6
Unleaded	1 litre	73.1	71.7	71.3	73.6	71.3

**ESTIMATED RESIDENT POPULATION AND COMPONENTS OF POPULATION CHANGE**  
**South Australia**

Period	Live births(a)	Deaths(a)	Components of population change			Total increase	Population at end of period
			Natural increase	Net migration			
				Interstate	Overseas (b)		
ANNUAL							
1985-86	19,657	10,427	9,230	-1,417	5,084	11,353	1,382,550
1986-87	19,628	10,577	9,051	-3,977	6,200	10,214	1,392,764
1987-88	19,288	10,799	8,489	-1,240	5,952	12,145	1,404,909
1988-89	19,528	10,814	8,664	-221	6,665	14,120	1,419,029
1989-90	19,653	11,329	8,253	-252	5,762	13,027	1,432,056
1990-91	19,966	11,120	8,767	1,545	4,619	14,243	1,446,299
1991-92	19,530	11,035	8,532	-133	2,897	11,296	1,457,595
1992-93	19,686	11,163	8,403	-4,650	1,546	5,299	1,462,894
1993-94	20,036	11,743	7,949	-3,466	1,994	6,477	1,469,371
1994-95	19,559	11,496	8,022	-6,529	3,102	4,595	1,473,596
1995-96	18,961	11,186	7,645	-6,238	4,119	5,526	1,479,153
MONTHLY/QUARTERLY							
1995 - 96 -							
July	1,506	937	..	..	..	..	..
August	1,617	1,180	..	..	..	..	..
September	1,728	963	1,759	-2,157	1,106	708	1,474,304
October	1,528	1,057	..	..	..	..	..
November	1,665	929	..	..	..	..	..
December	1,397	842	1,752	-1,512	946	1,186	1,475,490
January	1,663	932	..	..	..	..	..
February	1,694	806	..	..	..	..	..
March	1,567	839	2,316	-1,476	1,370	2,210	1,477,731
April	1,416	776	..	..	..	..	..
May	1,732	1,121	..	..	..	..	..
June	1,448	885	1,818	-1,093	697	1,422	1,479,153
1996 - 97 -							
July	1,733	1,088	..	..	..	..	..
August	1,663	1,193	..	..	..	..	..
September	1,460	943	1,731	n.y.a.	n.y.a.	n.y.a.	n.y.a.
October	1,764	1,115	..	..	..	..	..

(a) Registrations.

(b) Includes category jumping.

**LABOUR FORCE STATUS OF THE CIVILIAN POPULATION**  
**South Australia**

Period	Employed Full-time Males	Employed Full-time Females	Employed Part-time Males	Employed Part-time Females	Employed Total Males	Employed Total Females	Unem- ployed Males	Unem- ployed Females	Labour Force Males	Labour Force Females
<b>ANNUAL AVERAGE ('000)</b>										
1986-87	337.1	137.0	25.4	106.6	362.5	243.6	35.6	24.5	398.1	268.1
1987-88	334.4	137.4	29.3	111.6	363.7	249.0	35.1	24.9	398.8	273.9
1988-89	345.5	145.3	29.7	115.8	375.2	261.1	32.2	22.5	407.4	283.6
1989-90	352.0	149.3	31.5	119.8	383.5	269.1	28.5	20.9	412.0	290.0
1990-91	345.2	148.4	34.1	125.7	379.3	274.1	37.8	25.3	417.1	299.4
1991-92	323.3	145.7	37.5	121.6	360.8	267.3	50.0	29.3	410.8	296.6
1992-93	322.2	143.2	39.2	126.8	361.4	270.0	51.9	29.9	413.3	299.9
1993-94	322.0	146.3	40.0	127.0	362.0	273.3	47.3	29.9	409.3	303.2
1994-95	323.1	151.5	42.6	131.3	365.7	282.8	44.6	28.7	410.3	311.5
1995-96	325.6	150.4	45.4	136.8	371.0	287.2	42.2	26.6	413.2	313.8
<b>PERCENTAGE CHANGE FROM PREVIOUS YEAR, ANNUAL AVERAGE</b>										
1987-88	-0.8	0.3	15.4	4.7	0.3	2.2	-1.4	1.6	0.2	2.2
1988-89	3.3	5.7	1.4	3.8	3.2	4.9	-8.3	-9.6	2.2	3.5
1989-90	1.9	2.8	6.1	3.5	2.2	3.1	-11.5	-7.1	1.1	2.3
1990-91	-1.9	-0.6	8.3	4.9	-1.1	1.9	32.6	21.1	1.2	3.2
1991-92	-6.3	-1.8	10.0	-3.3	-4.9	-2.5	32.3	15.8	-1.5	-0.9
1992-93	-0.3	-1.7	4.5	4.3	0.2	1.0	3.8	2.0	0.6	1.1
1993-94	-0.1	2.2	2.0	0.2	0.2	1.2	-8.9	0.0	-1.0	1.1
1994-95	0.3	3.6	6.5	3.4	1.0	3.5	-5.7	-4.0	0.2	2.7
1995-96	0.8	-0.8	6.5	4.2	1.4	1.6	-5.5	-7.4	0.7	0.7
<b>MONTHLY, ORIGINAL ('000)</b>										
1995 - 96 -										
November	328.7	151.7	43.7	133.7	372.4	286.4	40.5	23.5	412.9	308.9
December	334.2	156.9	43.2	132.0	377.4	289.0	40.7	25.8	418.1	314.7
January	324.4	149.6	45.8	127.9	370.2	277.5	45.5	29.3	415.7	306.8
February	326.6	150.1	43.4	132.4	369.9	282.6	46.8	29.6	416.8	312.2
March	324.6	147.9	45.9	139.8	370.5	287.6	42.0	27.0	412.5	314.6
April	321.5	147.1	49.6	143.2	371.1	290.2	42.3	27.0	413.4	317.2
May	322.8	151.3	43.8	140.3	366.6	291.6	41.4	26.8	408.0	318.5
June	322.2	148.2	47.7	145.4	369.9	293.6	38.1	23.7	407.9	317.3
1996 - 97 -										
July	323.7	151.0	47.0	141.6	370.7	292.6	38.2	25.9	408.9	318.5
August	315.9	148.2	49.9	142.0	365.8	290.2	41.3	26.6	407.1	316.8
September	316.7	152.0	49.0	141.5	365.7	293.5	43.0	27.5	408.7	320.9
October	321.0	151.8	45.9	140.5	366.9	292.3	40.7	27.0	407.6	319.4
November	321.0	149.7	47.8	138.9	368.7	288.7	41.3	25.1	410.0	313.7
<b>MONTHLY, TREND ('000)</b>										
1995 - 96 -										
November	327.4	149.5	44.7	134.0	372.1	283.5	42.4	25.5	414.5	309.0
December	327.5	149.5	44.4	134.0	371.9	283.5	42.1	25.6	414.0	309.1
January	327.0	149.4	44.3	134.9	371.3	284.3	42.2	25.8	413.5	310.1
February	326.2	149.5	44.4	136.3	370.6	285.8	42.3	26.0	412.9	311.8
March	325.2	149.7	45.0	137.9	370.1	287.6	42.4	26.2	412.5	313.8
April	324.1	150.1	45.6	139.3	369.7	289.4	42.2	26.4	411.9	315.8
May	322.9	150.6	46.6	140.2	369.5	290.8	41.7	26.7	411.2	317.5
June	321.9	151.1	47.4	140.6	369.3	291.7	41.2	27.0	410.5	318.7
1996 - 97 -										
July	320.9	151.2	48.2	140.7	369.1	291.9	41.0	27.4	410.1	319.3
August	320.1	151.0	48.5	140.6	368.6	291.6	41.1	27.7	409.7	319.3
September	319.5	150.7	48.5	140.7	368.0	291.4	41.5	27.7	409.5	319.1
October	319.2	150.4	48.2	140.7	367.4	291.1	41.9	27.6	409.3	318.7
November	318.9	149.8	48.2	141.0	367.1	290.8	42.4	27.4	409.5	318.2
<b>PERCENTAGE CHANGE FROM PREVIOUS MONTH, TREND</b>										
1995 - 96 -										
December	0.0	0.0	-0.7	0.0	-0.1	0.0	-0.7	0.4	-0.1	0.0
January	-0.2	-0.1	-0.2	0.7	-0.2	0.3	0.2	0.8	-0.1	0.3
February	-0.2	0.1	0.2	1.0	-0.2	0.5	0.2	0.8	-0.1	0.5
March	-0.3	0.1	1.4	1.2	-0.1	0.6	0.2	0.8	-0.1	0.6
April	-0.3	0.3	1.3	1.0	-0.1	0.6	-0.5	0.8	-0.1	0.6
May	-0.4	0.3	2.2	0.6	-0.1	0.5	-1.2	1.1	-0.2	0.5
June	-0.3	0.3	1.7	0.3	-0.1	0.3	-1.2	1.1	-0.2	0.4
1996 - 97 -										
July	-0.3	0.1	1.7	0.1	-0.1	0.1	-0.5	1.5	-0.1	0.2
August	-0.2	-0.1	0.6	-0.1	-0.1	-0.1	0.2	1.1	-0.1	0.0
September	-0.2	-0.2	0.0	0.1	-0.2	-0.1	1.0	0.0	0.0	-0.1
October	-0.1	-0.2	-0.6	0.0	-0.2	-0.1	1.0	-0.4	0.0	-0.1
November	-0.1	-0.4	0.0	0.2	-0.1	-0.1	1.2	-0.7	0.0	-0.2

**LABOUR FORCE STATUS OF THE CIVILIAN POPULATION AGED 15 AND OVER**  
**South Australia**

Period	Civilian Population aged 15 and over Males ('000)	Civilian Population aged 15 and over Females ('000)	Unemploy- ment rate Ages 15-19 Persons (%)	Unemploy- ment rate All Ages Males (%)	Unemploy- ment rate All Ages Females (%)	Unemploy- ment rate All Ages Persons (%)	Partici- pation rate Males (%)	Partici- pation rate Females (%)	Partici- pation rate Persons (%)
ANNUAL AVERAGE									
1985-86	526.9	545.6	20.6	8.2	8.8	8.4	75.6	46.8	60.5
1986-87	534.8	552.4	22.1	8.9	9.1	9.0	74.4	48.5	61.3
1987-88	542.4	560.0	20.8	8.8	9.1	8.9	73.5	48.9	61.0
1988-89	547.9	566.9	17.8	7.9	7.9	7.9	74.3	50.0	62.0
1989-90	552.4	573.4	16.2	6.9	7.2	7.1	74.6	50.6	62.4
1990-91	558.3	579.8	19.2	9.1	8.4	8.8	74.7	51.6	63.0
1991-92	563.9	585.4	25.0	12.1	9.9	11.2	72.9	50.7	61.6
1992-93	567.4	588.9	26.6	12.6	10.0	11.5	72.8	51.0	61.7
1993-94	570.6	592.0	28.3	11.5	9.8	10.8	71.7	51.2	61.3
1994-95	573.7	594.7	25.2	10.9	9.2	10.2	71.5	52.4	61.8
1995-96	576.4	597.3	27.1	10.3	8.4	9.5	71.8	52.3	61.9
PERCENTAGE CHANGE FROM PREVIOUS YEAR, ANNUAL AVERAGE									
1986-87	1.5	1.2	..	..	..	..	..	..	..
1987-88	1.4	1.4	..	..	..	..	..	..	..
1988-89	1.0	1.2	..	..	..	..	..	..	..
1989-90	0.8	1.1	..	..	..	..	..	..	..
1990-91	1.1	1.1	..	..	..	..	..	..	..
1991-92	1.0	1.0	..	..	..	..	..	..	..
1992-93	0.6	0.6	..	..	..	..	..	..	..
1993-94	0.6	0.6	..	..	..	..	..	..	..
1994-95	0.6	0.5	..	..	..	..	..	..	..
1995-96	0.5	0.5	..	..	..	..	..	..	..
MONTHLY, ORIGINAL									
1995 - 96 -									
September	575.3	596.2	27.5	10.7	8.3	9.7	72.7	52.1	62.2
October	575.5	596.5	30.8	10.5	8.1	9.5	71.7	51.3	61.3
November	575.7	596.7	25.3	9.8	7.6	8.9	71.7	51.8	61.6
December	575.9	596.9	25.6	9.7	8.2	9.1	72.6	52.7	62.5
January	576.2	597.2	30.5	10.9	9.6	10.4	72.1	51.4	61.6
February	576.5	597.5	30.5	11.2	9.5	10.5	72.3	52.3	62.1
March	576.7	597.7	26.6	10.2	8.6	9.5	71.5	52.6	61.9
April	577.0	598.0	24.6	10.2	8.5	9.5	71.7	53.0	62.2
May	577.3	598.2	27.3	10.1	8.4	9.4	70.7	53.2	61.8
June	577.6	598.5	22.4	9.3	7.5	8.5	70.6	53.0	61.7
1996 - 97 -									
July	578.0	598.9	24.1	9.3	8.1	8.8	70.7	53.2	61.8
August	578.4	599.2	23.8	10.2	8.4	9.4	70.4	52.9	61.5
September	578.8	599.6	23.7	10.5	8.6	9.7	70.6	53.5	61.9
October	579.1	599.9	20.7	10.0	8.5	9.3	70.4	53.2	61.7
November	579.5	600.2	n.y.a.	10.1	8.0	9.2	70.8	52.3	61.4
MONTHLY, TREND									
1995 - 96 -									
September	n.a.	n.a.	n.a.	10.6	8.3	9.6	72.2	52.2	62.0
October				10.4	8.2	9.5	72.1	51.9	61.8
November				10.2	8.2	9.4	72.0	51.8	61.7
December				10.2	8.3	9.4	71.9	51.8	61.7
January				10.2	8.3	9.4	71.8	51.9	61.7
February				10.3	8.4	9.4	71.6	52.2	61.7
March				10.3	8.4	9.4	71.5	52.5	61.8
April				10.2	8.4	9.4	71.4	52.8	61.9
May				10.1	8.4	9.4	71.2	53.1	62.0
June				10.0	8.5	9.4	71.1	53.3	62.0
1996 - 97 -									
July				10.0	8.6	9.4	70.9	53.3	62.0
August				10.0	8.7	9.4	70.8	53.3	61.9
September				10.1	8.7	9.5	70.8	53.2	61.8
October				10.2	8.7	9.6	70.7	53.1	61.8
November				10.4	8.6	9.6	70.7	53.0	61.7

**LABOUR FORCE STATUS OF THE CIVILIAN POPULATION AGED 15 AND OVER**  
**Adelaide Statistical Division and the balance of South Australia**

Period	Employed Males (000)	Employed Females (000)	Unemployed Males (000)	Unemployed Females (000)	Unemploy- ment rate Males (%)	Unemploy- ment rate Females (%)	Participa- tion rate Males (%)	Participa- tion rate Females (%)
<b>ADELAIDE STATISTICAL DIVISION</b>								
1993 - 94 -								
January	261.0	199.9	41.4	25.9	13.7	11.5	72.1	50.7
February	261.3	202.7	39.4	25.8	13.1	11.3	71.6	51.2
March	267.0	204.6	35.7	24.6	11.8	10.7	72.0	51.4
April	264.3	205.5	34.0	20.8	11.4	9.2	70.9	50.7
May	265.2	207.0	34.0	24.3	11.4	10.5	71.1	51.8
June	263.3	204.2	32.7	23.6	11.0	10.4	70.3	51.0
1994 - 95 -								
July	265.6	210.8	33.6	24.0	11.2	10.2	71.1	52.5
August	260.9	209.8	36.6	23.3	12.3	10.0	70.6	52.1
November	261.7	212.6	33.2	23.1	11.3	9.8	69.9	52.6
February	267.9	209.6	35.8	24.7	11.8	10.6	71.9	52.3
May	264.7	212.0	34.6	22.0	11.6	9.4	70.8	52.2
1995 - 96 -								
August	263.1	215.3	33.9	19.4	11.4	8.3	70.2	52.3
November	265.3	212.3	32.8	17.0	11.0	7.4	70.4	51.1
February	265.0	212.1	37.3	22.7	12.3	9.7	71.3	51.2
May	264.7	218.5	32.7	21.1	11.0	8.8	70.0	53.2
1996 - 97 -								
August	266.0	214.4	31.3	21.0	10.5	8.9	69.8	52.2
November	264.5	219.4	32.7	20.8	11.0	8.7	69.7	53.3
<b>ASD: NORTHERN ADELAIDE</b>								
1993 - 94 -								
January	78.9	56.1	11.7	10.2	12.9	15.4	73.0	50.7
February	79.3	60.9	12.1	9.1	13.2	13.0	74.6	52.9
March	82.1	59.0	10.7	8.9	11.5	13.0	75.8	52.1
April	80.1	60.4	10.7	7.0	11.8	10.4	74.1	52.0
May	82.7	59.9	9.7	9.1	10.5	13.1	75.3	53.1
June	81.6	58.8	9.9	9.2	10.8	13.5	75.0	51.5
1994 - 95 -								
July	84.7	62.8	9.6	8.5	10.1	11.9	75.9	53.8
August	83.0	62.8	11.7	7.6	12.4	10.8	75.9	52.5
November	80.7	62.8	12.9	6.9	13.8	9.9	73.0	51.6
February	82.8	63.7	13.4	8.1	13.9	11.3	74.7	54.8
May	82.7	60.9	12.1	8.1	12.7	11.7	75.8	52.5
1995 - 96 -								
August	81.6	64.8	14.1	7.7	14.8	10.6	75.2	53.4
November	83.4	67.2	11.8	6.1	12.4	8.3	75.5	54.3
February	85.3	70.3	12.9	6.5	13.1	8.5	77.6	56.5
May	90.1	73.1	10.5	6.1	10.5	7.7	77.2	56.6
1996 - 97 -								
August	85.8	67.3	11.2	6.9	11.5	9.2	76.2	59.2
November	85.7	67.3	11.1	7.7	11.5	10.2	75.6	55.6
<b>ASD: WESTERN ADELAIDE</b>								
1993 - 94 -								
January	51.4	36.1	10.7	6.8	17.2	15.9	68.7	45.8
February	48.4	35.7	10.7	5.4	18.0	13.2	67.5	44.1
March	48.2	38.3	9.7	4.7	16.8	10.9	67.4	45.0
April	49.3	37.6	10.2	4.9	17.2	11.6	68.1	44.1
May	50.7	39.5	9.2	4.3	15.3	9.9	68.0	46.4
June	49.9	37.5	9.5	4.1	16.0	9.8	67.2	44.5
1994 - 95 -								
July	48.3	37.6	9.1	5.2	15.8	12.2	66.6	46.1
August	48.2	38.8	9.2	4.6	16.0	10.7	66.1	46.7
November	47.5	39.3	7.2	6.4	13.2	13.9	64.7	48.2
February	45.7	39.0	5.9	5.4	11.4	12.1	64.0	46.5
May	48.7	38.4	6.5	4.5	11.8	10.5	67.1	46.9
1995 - 96 -								
August	47.8	36.9	7.6	3.4	13.8	8.4	65.9	46.7
November	47.1	38.2	7.9	3.2	14.4	7.8	63.8	47.1
February	44.0	36.8	9.5	5.1	17.8	12.3	62.5	46.9
May	41.8	36.7	7.5	3.3	15.2	8.1	60.1	48.5
1996 - 97 -								
August	45.0	36.7	7.6	4.8	14.5	11.6	62.0	45.0
November	46.3	40.7	6.5	3.3	12.3	7.6	62.4	47.5



**LABOUR FORCE STATUS OF THE CIVILIAN POPULATION AGED 15 AND OVER**  
**Adelaide Statistical Division and the balance of South Australia**

Period	Employed Males ( <sup>000</sup> )	Employed Females ( <sup>000</sup> )	Unem- ployed Males ( <sup>000</sup> )	Unem- ployed Females ( <sup>000</sup> )	Unemploy- ment rate Males (%)	Unemploy- ment rate Females (%)	Participa- tion rate Males (%)	Participa- tion rate Females (%)
ASD: EASTERN ADELAIDE								
1993 - 94 -								
January	54.3	46.0	6.3	3.6	10.4	7.3	72.6	54.1
February	54.9	45.2	6.5	4.1	10.6	8.3	71.0	55.1
March	57.9	46.7	5.4	3.6	8.5	7.2	70.4	54.1
April	56.3	48.7	4.6	3.0	7.6	5.8	70.6	54.4
May	54.2	47.7	6.0	4.4	9.9	8.4	69.5	54.8
June	56.0	49.7	4.4	3.4	7.3	6.4	68.0	56.3
1994 - 95 -								
July	55.0	51.0	6.3	3.7	10.3	6.8	69.2	58.3
August	56.0	50.5	6.2	3.8	9.9	7.0	71.8	58.8
November	58.8	50.7	5.4	2.4	8.5	4.5	72.1	59.3
February	59.4	45.8	7.4	3.8	11.0	7.7	74.2	54.5
May	58.5	45.2	6.5	3.5	10.0	7.2	69.7	53.6
1995 - 96 -								
August	56.4	46.6	4.8	2.5	7.9	5.2	70.9	53.6
November	54.3	45.9	5.2	*1.9	8.7	*4.0	70.4	51.2
February	53.0	43.9	5.4	4.9	9.3	10.0	69.3	52.2
May	51.4	44.1	4.2	4.4	7.5	9.1	65.6	52.2
1996 - 97 -								
August	54.4	43.5	4.4	3.1	7.5	6.7	66.6	52.1
November	54.2	44.2	5.6	3.0	9.3	6.4	68.0	53.1
ASD: SOUTHERN ADELAIDE								
1993 - 94 -								
January	76.3	61.8	12.7	5.2	14.3	7.8	73.2	51.7
February	78.7	60.9	10.1	7.2	11.4	10.6	71.9	52.0
March	78.8	60.6	9.9	7.4	11.2	10.9	72.8	53.2
April	78.6	58.9	8.4	5.8	9.7	9.0	70.1	51.6
May	77.6	59.9	9.1	6.6	10.5	9.9	70.3	52.1
June	75.9	58.2	8.9	6.9	10.5	10.6	69.6	51.2
1994 - 95 -								
July	77.7	59.3	8.7	6.5	10.0	9.9	70.5	51.5
August	73.7	57.8	9.5	7.3	11.4	11.2	67.4	50.8
November	74.7	59.8	7.6	7.5	9.3	11.1	68.5	52.4
February	80.0	61.1	9.2	7.5	10.4	10.9	72.5	52.5
May	74.8	67.5	9.5	5.9	11.3	8.0	69.0	54.6
1995 - 96 -								
August	77.4	66.9	7.3	5.7	8.6	7.9	67.6	53.9
November	80.4	61.0	7.9	5.7	8.9	8.6	69.7	50.4
February	82.7	61.1	9.5	6.2	10.3	9.2	72.1	51.4
May	81.3	64.6	10.5	7.3	11.4	10.2	71.9	53.5
1996 - 97 -								
August	80.7	66.9	8.1	6.1	9.1	8.4	70.9	55.2
November	78.3	67.3	9.5	6.8	10.8	9.2	69.7	54.9
BALANCE OF SOUTH AUSTRALIA (Excludes ASD)								
1993 - 94 -								
January	100.4	68.4	12.7	7.7	11.2	10.1	74.8	52.0
February	98.3	69.6	10.7	7.7	9.8	10.0	72.1	52.8
March	97.5	68.4	11.7	8.1	10.7	10.5	72.2	52.2
April	97.6	69.0	10.5	6.7	9.8	8.8	71.5	51.6
May	98.6	67.3	9.8	6.7	9.0	9.1	71.6	50.5
June	97.8	69.8	11.9	7.5	10.8	9.7	72.5	52.8
1994 - 95 -								
July	100.4	72.2	8.8	6.4	8.1	8.1	72.2	53.6
August	101.9	69.6	7.8	5.5	7.1	7.3	72.6	51.2
November	102.6	69.2	9.0	6.6	8.1	8.7	73.7	51.7
February	103.9	73.0	9.6	6.1	8.5	7.7	74.8	53.8
May	103.2	76.3	8.6	4.1	7.7	5.1	73.5	54.6
1995 - 96 -								
August	105.9	73.0	9.5	4.7	8.2	6.0	75.8	52.7
November	107.2	73.0	7.6	6.5	6.7	8.2	75.4	53.9
February	105.0	70.5	9.5	6.9	8.3	8.9	75.2	52.3
May	101.9	73.1	8.7	5.7	7.9	7.3	72.6	53.2
1996 - 97 -								
August	99.8	75.7	10.0	5.7	9.1	7.0	72	54.8
November	102.4	72.9	8.0	6.2	7.3	7.8	72.3	53.2

\* Estimate has a relative standard error exceeding 25%. It is subject to sampling variability too high for most practical uses.

**AVERAGE WEEKLY EARNINGS OF EMPLOYEES**  
**South Australia**

Period	Full-time adults						All employees		
	Ordinary time earnings			Total earnings					
	Males	Females	Persons	Males	Females	Persons	Males	Females	Persons
ANNUAL AVERAGE (\$ per week)									
1985-86	406.30	340.50	388.30	431.80	346.60	408.40	389.00	252.70	334.50
1986-87	431.80	363.70	412.20	455.90	370.20	431.20	411.80	268.90	352.20
1987-88	458.60	389.70	438.40	485.00	397.00	459.20	440.10	295.10	379.60
1988-89	481.50	424.30	465.70	517.60	435.10	494.90	473.40	315.10	408.50
1989-90	517.50	454.90	499.40	560.70	466.50	533.50	511.60	338.00	437.80
1990-91	561.30	486.10	537.90	598.90	496.10	566.90	546.70	358.10	462.00
1991-92	588.40	524.10	567.80	624.90	534.00	595.80	564.80	386.90	483.70
1992-93	610.10	534.90	585.40	646.40	546.80	613.70	560.00	382.60	477.40
1993-94	625.10	547.60	600.00	667.50	560.10	632.70	595.10	396.60	503.30
1994-95	632.70	559.10	608.20	681.70	572.50	645.30	599.90	411.90	513.40
1995-96	653.80	555.90	622.50	703.15	568.50	660.05	620.10	403.90	520.65
PERCENTAGE CHANGE FROM PREVIOUS YEAR									
1986-87	6.3	6.8	6.2	5.6	6.8	5.6	5.9	6.4	5.3
1987-88	6.2	7.1	6.4	6.4	7.2	6.5	6.9	9.7	7.8
1988-89	5.0	8.9	6.2	6.7	9.6	7.8	7.6	6.8	7.6
1989-90	7.5	7.2	7.2	8.3	7.2	7.8	8.1	7.3	7.2
1990-91	8.5	6.9	7.7	6.8	6.3	6.3	6.9	5.9	5.5
1991-92	4.8	7.8	5.6	4.3	7.6	5.1	3.3	8.0	4.7
1992-93	3.7	2.1	3.1	3.4	2.4	3.0	-0.8	-1.1	-1.3
1993-94	2.5	2.4	2.5	3.3	2.4	3.1	6.3	3.7	5.4
1994-95	1.2	2.1	1.4	2.1	2.2	2.0	0.8	3.9	2.0
1995-96	3.3	-0.6	2.4	3.1	-0.7	2.3	3.4	-1.9	1.4
QUARTERLY (\$ per week)									
1993 - 94 -									
18 February	619.90	548.80	597.30	665.30	558.80	631.50	601.30	405.50	512.80
20 May	622.90	551.40	599.80	664.30	567.10	632.90	595.80	399.80	504.80
1994 - 95 -									
19 August	628.20	553.70	602.60	674.20	566.70	637.20	591.40	410.80	507.40
18 November	619.10	558.00	598.60	667.50	572.80	635.70	586.90	410.20	505.10
17 February	648.40	560.80	619.90	699.90	572.80	658.50	620.10	415.80	527.90
19 May	635.10	563.90	611.70	685.20	577.80	649.90	601.10	410.80	513.30
1995 - 96 -									
18 August	639.90	560.10	613.80	684.50	571.80	647.60	600.80	408.60	510.20
17 November	647.60	549.20	616.10	693.10	560.90	650.90	607.60	396.30	510.60
16 February	658.90	557.20	626.30	713.60	569.50	667.30	631.40	402.40	527.20
17 May	668.90	557.10	633.80	721.40	571.80	674.40	640.50	408.30	534.60
1996 - 97 -									
16 August	666.70	562.40	632.40	720.10	574.40	672.30	628.50	403.60	523.60
PERCENTAGE CHANGE FROM CORRESPONDING REFERENCE DATE IN PREVIOUS YEAR									
1994 - 95 -									
17 February	4.6	2.2	3.8	5.2	2.5	4.3	3.1	2.5	2.9
19 May	2.0	2.3	2.0	3.1	1.9	2.7	0.9	2.8	1.7
1995 - 96 -									
18 August	1.9	1.2	1.9	1.5	0.9	1.6	1.6	-0.5	0.6
17 November	4.6	-1.6	2.9	3.8	-2.1	2.4	3.5	-3.4	1.1
16 February	1.6	-0.8	1.0	2.0	-0.6	1.3	1.8	-3.2	-0.1
17 May	5.3	-1.2	3.6	5.3	-1.0	3.8	6.6	-0.6	4.1
1996 - 97 -									
16 August	4.2	0.4	3.0	5.2	0.5	3.8	4.6	-1.2	2.6
PERCENTAGE CHANGE FROM PREVIOUS REFERENCE DATE									
1993 - 94 -									
20 May	0.5	0.5	0.4	-0.2	1.5	0.2	-0.9	-1.4	-1.6
1994 - 95 -									
19 August	0.9	0.4	0.5	1.5	-0.1	0.7	-0.7	2.8	0.5
18 November	-1.4	0.8	-0.7	-1.0	1.1	-0.2	-0.8	-0.1	-0.5
17 February	4.7	0.5	3.6	4.9	0.0	3.6	5.7	1.4	4.5
19 May	-2.1	0.6	-1.3	-2.1	0.9	-1.3	-3.1	-1.2	-2.8
1995 - 96 -									
18 August	0.8	-0.7	0.3	-0.1	-1.0	-0.4	0.0	-0.5	-0.6
17 November	1.2	-1.9	0.4	1.3	-1.9	0.5	1.1	-3.0	0.1
16 February	1.7	1.5	1.7	3.0	1.5	2.5	3.9	1.5	3.3
17 May	1.5	0.0	1.2	1.1	0.4	1.1	1.4	1.5	1.4
1996 - 97 -									
16 August	-0.3	1.0	-0.2	-0.2	0.5	-0.3	-1.9	-1.2	-2.1

# **FINANCE COMMITMENTS** **South Australia**

Secured housing finance commitments to individuals						
<u>Construction and purchase of dwellings</u>						
Period	Number of dwelling units	Amount (\$ million)	Alterations and additions (\$ million)	Personal finance commitments (\$ million)	Commercial finance commitments (\$ million)	Lease finance commitments (\$ million)
ANNUAL						
1985-86	21,714	920.1	48.9	1,203.9	3,492.7	339.8
1986-87	21,658	965.5	47.1	1,222.4	4,242.8	334.5
1987-88	26,582	1,266.6	47.0	1,448.9	6,486.6	392.1
1988-89	29,977	1,574.2	51.4	1,534.1	7,285.5	512.4
1989-90	25,650	1,438.2	45.8	1,525.7	6,926.4	445.4
1990-91	28,694	1,731.3	58.8	1,503.6	6,257.0	323.2
1991-92	31,765	2,083.8	88.8	1,456.7	6,667.9	256.2
1992-93	36,960	2,569.5	102.8	1,656.9	5,122.5	249.5
1993-94	45,725	3,387.9	221.8	1,840.3	5,467.2	250.6
1994-95	36,429	2,879.7	242.2	2,152.2	5,405.6	271.4
1995-96	38,707	2,982.2	240.7	2,211.5	6,516.2	265.4
PERCENTAGE CHANGE FROM PREVIOUS YEAR						
1986-87	-0.3	4.9	-3.7	1.5	21.5	-1.6
1987-88	22.7	31.2	-0.2	18.5	52.9	17.2
1988-89	12.8	24.3	9.4	5.9	12.3	30.7
1989-90	-14.4	-8.6	-10.9	-0.5	-4.9	-13.1
1990-91	11.9	20.4	28.4	-1.4	-9.7	-27.4
1991-92	10.7	20.4	51.0	-3.1	6.6	-20.7
1992-93	16.4	23.3	15.8	13.7	-23.2	-2.6
1993-94	23.7	31.9	115.7	11.1	6.7	0.5
1994-95	-20.3	-15.0	9.2	16.9	-1.1	8.3
1995-96	6.3	3.6	-0.6	2.8	20.5	-2.2
MONTHLY						
1995 - 96 -						
August	3,307	256.3	17.9	209.5	461.8	20.0
September	3,161	241.5	18.2	182.4	384.2	18.2
October	3,257	246.9	19.6	179.3	412.6	18.8
November	3,593	271.3	23.3	186.1	488.3	21.0
December	2,981	231.2	17.8	171.1	720.2	25.7
January	2,965	226.9	17.4	175.6	562.2	13.0
February	3,482	264.6	20.6	179.2	447.5	23.4
March	3,694	284.8	23.2	186.1	542.7	25.4
April	3,271	249.5	18.3	175.1	604.8	16.3
May	3,276	252.0	18.9	192.4	773.7	24.8
June	2,707	213.6	26.1	182.0	627.7	31.3
1996 - 97 -						
July	3,013	237.8	21.7	190.8	656.7	22.8
August	2,776	216.9	18.8	182.8	444.4	18.9
September	3,064	250.6	19.4	177.6	492.4	22.2
October	2,965	233.6	14.0	205.3	445.9	15.3
PERCENTAGE CHANGE FROM PREVIOUS MONTH						
1995 - 96 -						
September	-4.4	-5.8	1.4	-12.9	-16.8	-9.1
October	3.0	2.3	7.6	-1.7	7.4	3.3
November	10.3	9.9	18.9	3.8	18.4	11.7
December	-17.0	-14.8	-23.5	-8.1	47.5	22.3
January	-0.5	-1.9	-2.2	2.6	-21.9	-49.4
February	17.4	16.6	18.1	2.0	-20.4	79.9
March	6.1	7.6	12.8	3.8	21.3	8.4
April	-11.5	-12.4	-20.9	-5.9	11.4	-35.8
May	0.2	1.0	3.2	9.8	27.9	52.1
June	-17.4	-15.2	37.9	-5.4	-18.9	26.2
1996 - 97 -						
July	11.3	11.3	-16.8	4.8	4.6	-27.1
August	-7.9	-8.8	-13.4	-4.2	-32.3	-17.2
September	10.4	15.5	3.4	-2.9	10.8	17.8
October	-3.2	-6.8	-27.9	15.6	-9.4	-31.2

## PUBLICATIONS SOURCE INDEX

- 1 *Australian National Accounts: State Accounts* (5242.0) Quarterly
- 2 *International Merchandise Trade, Australia* (5422.0) Quarterly
- 3 *Retail Trade, Australia* (8501.0) Monthly
- 4 *New Motor Vehicles Registrations, Australia, Preliminary* (9301.0) Monthly
- 5 *Tourist Accommodation, Australia* (8635.0) Quarterly
- 6 *State Estimates of Private New Capital Expenditure* (5646.0) Quarterly
- 7 *Building Approvals, Australia* (8731.0) Monthly
- 8 *Building and Construction Activity, Australia* (8754.0) Quarterly
- 8a *Building Activity, Australia, Dwelling Unit Commencements, Preliminary* (8750.0) Quarterly
- 9 *Engineering Construction Activity, Australia* (8762.0.40.001) Quarterly
- 10 *Manufacturing Production, Australia, Preliminary* (8301.0) Monthly
- 11 *Livestock Products, Australia* (7215.0) Monthly
- 12 *Actual and Expected Private Mineral Exploration, Australia* (8412.0) Quarterly
- 13 *Consumer Price Index* (6401.0) Quarterly
- 14 *Price Index of Materials Used in House Building, Six State Capital Cities and Canberra* (6408.0) Monthly
- 15 *Price Index of Materials Used in Building Other Than House Building, Six State Capital Cities and Canberra* (6407.0) Monthly
- 16 *House Price Indexes: Eight Capital Cities* (6416.0) Quarterly
- 17 *Australian Demographic Statistics* (3101.0) Quarterly
- 18 *The Labour Force, Australia, Preliminary* (6202.0) Monthly
- 19 *Job Vacancies and Overtime, Australia* (6354.0) Quarterly
- 20 *Industrial Disputes, Australia* (6321.0) Monthly
- 21 Unpublished overseas arrival and departure statistics on microfiche
- 22 *Average Weekly Earnings, States and Australia* (6302.0) Quarterly
- 23 *Award Rates of Pay Indexes, Australia* (6312.0) Monthly
- 24 *Housing Finance for Owner Occupation, Australia* (5609.0) Monthly
- 25 Unpublished statistics available from PC AUSSTATS
- 26 *Reserve Bank of Australia Bulletin*

## ABS PUBLICATIONS AND PRODUCTS

Statistics collected by the ABS are generally made available in published form. Some, including those not published, are available in one or more of the following forms: microfiche, magnetic tape, computer printout, CD, floppy disk, photocopy and clerically extracted tabulation.

Current publications produced by the ABS are listed in the *Catalogue of Publications and Products, Australia* (1101.0). The ABS also issues on Tuesdays and Fridays a *Release Advice* (1105.0) which lists publications to be released within the next few days. The Catalogue and Release Advice are available from any ABS Office.

To receive ABS publications on a regular basis contact the ABS *Publication Mailing Service* on 1800 02 0608.

A large range of data is available via on-line services, diskette, magnetic tape, tape cartridge and CD ROM. For more details about our electronic data services, contact any ABS Office.

The ABS *Information Consultancy Service* has specialist staff to assist and advise clients

with their statistical inquiries. For more detailed information about these services call at the ABS, 55 Currie Street, Adelaide, telephone the Information Officer on (08) 8237 7100, or write to Information Service, ABS, GPO Box 2272, Adelaide SA 5001.

The ABS also provides a *Statistical Consultancy Service*, for expert assistance in survey, sample and questionnaire design, data collection, processing and analysis, and statistical modelling. For more information contact Gary Niedorfer, on (08) 8237 7379.

## SYMBOLS AND OTHER USAGES

n.a. not available

n.y.a. not yet available

.. not applicable

0, 0.0 nil or rounded to zero

Where figures have been rounded, discrepancies may occur between sums of the component items and totals.



© Commonwealth of Australia 1996

**Recommended retail price: \$15.50**



**2130740001970**

ISSN 1039-8880